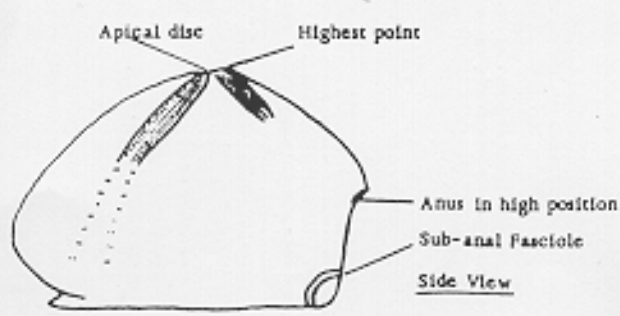
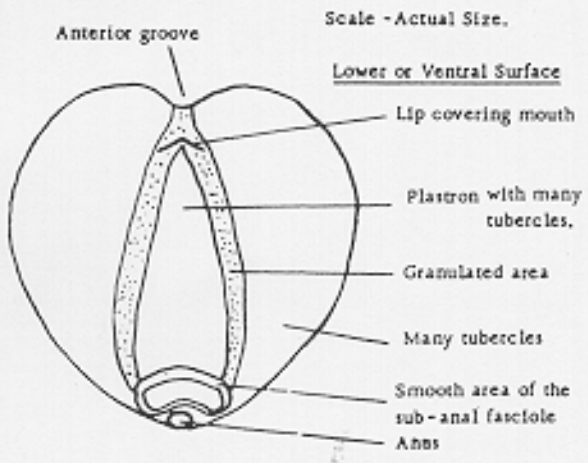
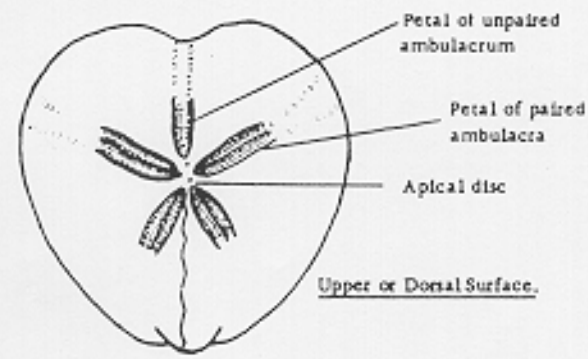
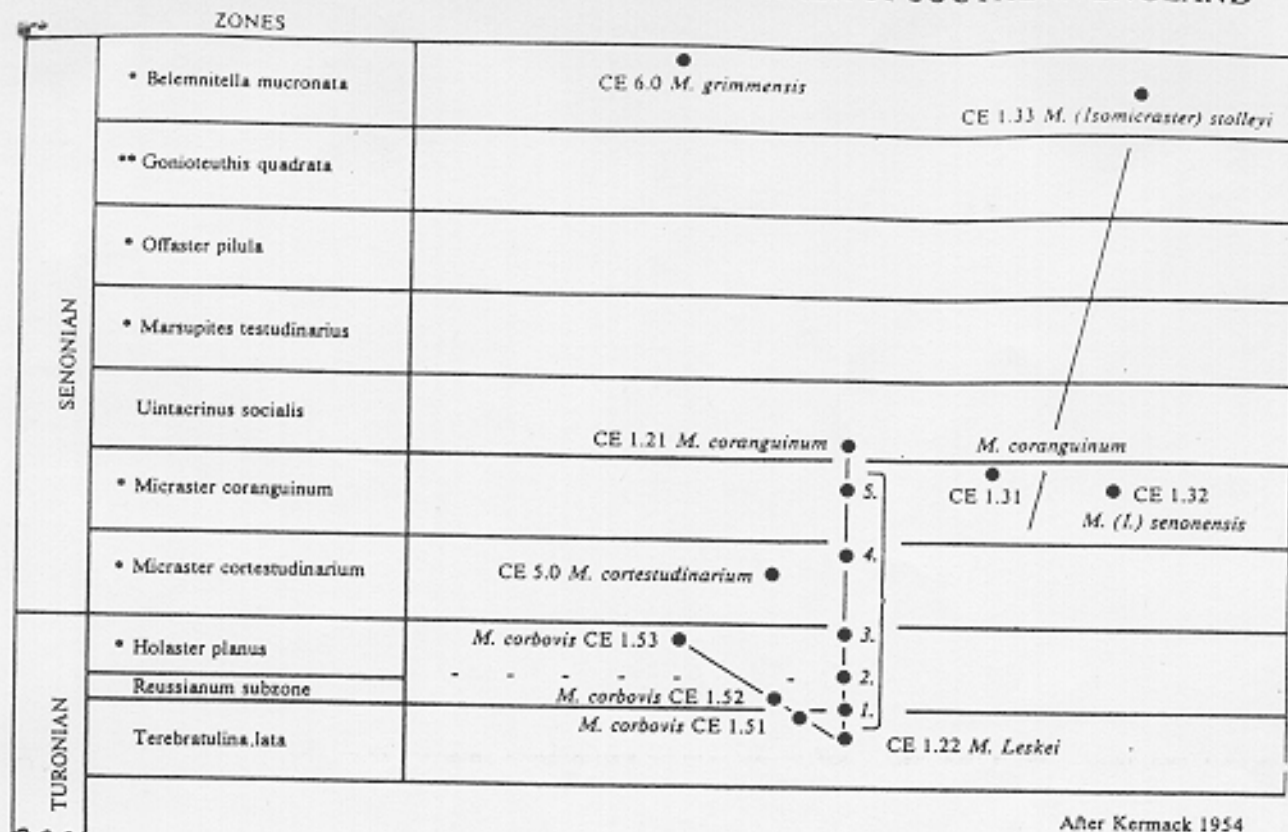


# PHYLOGENY OF MICRASTER IN THE UPPER CHALK OF SOUTHERN ENGLAND



## MICRASTER PETAL SERIES

	ZONE	STRATIGRAPHICAL RANGE
SENONIAN	<i>Urtacrinus socialis</i>	5
	<i>Micraster coranguinum</i>	
	<i>Micraster cortestudinarium</i>	4
TURONIAN	<i>Holaster planus</i> & <i>Subprionocyclus neptuni</i>	3
	<i>Terebratulina lata</i> & <i>Collignoniceras voelligeri</i>	2
	<i>Inoceramus labiatus</i> & <i>Mammites nodosoides</i>	1

The diagram shows the approximate ranges of the petal ornamentation series: 1 = Smooth; 2 = Sutured; 3 = Inflated; 4 = Subdivided; 5 = Divided.

Note. In southern England, forms such as *M. Leskei* with smooth petals, extend downwards to near the base of the Lata Zone. In south-west England they extend well down into the Labiatus Zone.