



Dreamweaver MX - PC

How to Define a Local Site

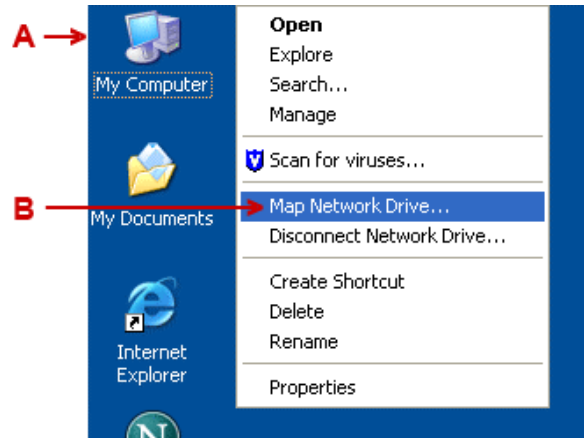
Overview

When working with Dreamweaver you will need to define the local site, which tells Dreamweaver where your Web site files are stored. It is essential that you use Dreamweaver's site map tool if your Web site uses templates. Before opening Dreamweaver, you need to connect to the network.

I. Connect to Network on a PC

A. Right mouse click (on your desktop) on "My Computer" (see A).

B. Select "Map Network Drive" (see B).



C. A "Map Network Drive" dialogue box will appear (see C).

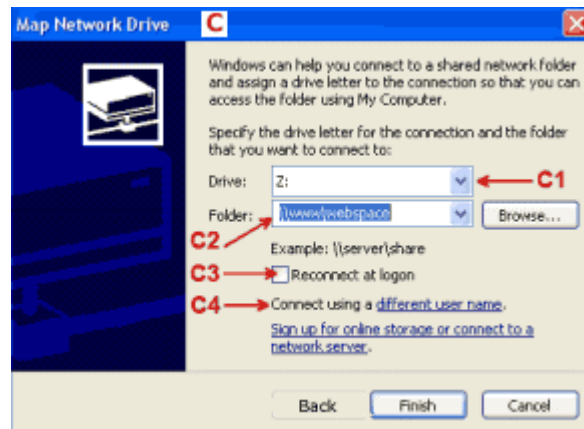
1. **Drive:** choose any letter from the pull down menu (see C1).

Note: You may want to select the same drive for Web space each time you map to a network to avoid conflicts in Dreamweaver. For example, if you choose drive Z to work in your Web space today and then tomorrow choose drive H, you will need to redefine your site map in Dreamweaver to point to drive H.

2. **Folder** – `\\www\web space` (see C2) select this path from the pull down menu next to folder or type this path.

3. **Reconnect at logon** - we *do not* recommend that you select this option (see C3), as this leaves your Web space vulnerable to unauthorized users.

4. Select **Connect using a different user name** (see C4).

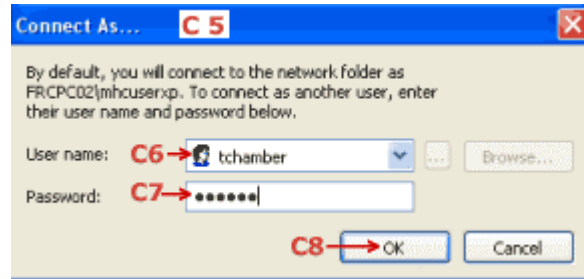




Define Site in Dreamweaver MX - PC

By Theresa Chamberland
02/24/05

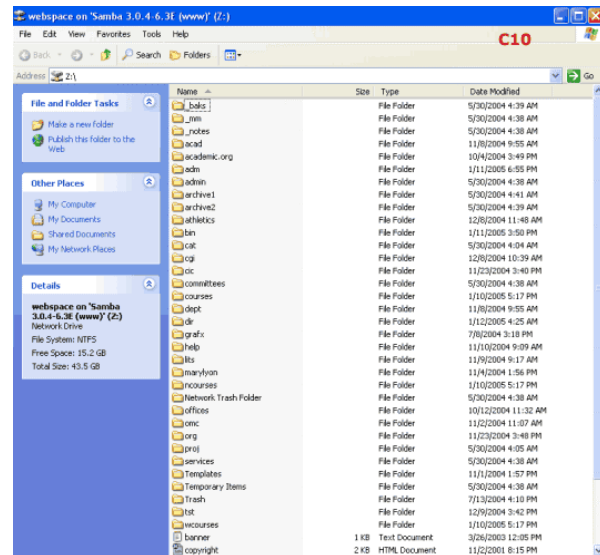
5. A "Connect As..." dialogue box will appear (see C5).
6. Enter your **User name** (see C6).
7. Enter your **Password** (see C7).
8. Select **OK**. (see C8).



9. Select **Finish** (see C9).



10. A window for your Webspaces will open (see C10).
 - Close this window (see C10).
 - *Do not* open files from the desktop folders.
 - You will open files from Dreamweaver's site map tool.
 - Open Dreamweaver and define your site (see instructions on next page).





Define Site in Dreamweaver MX - PC

By Theresa Chamberland

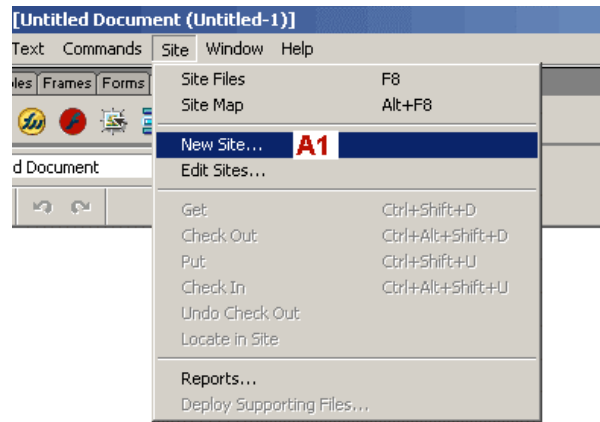
02/24/05

II. Open Dreamweaver and Define Local Site

Note: When you open Dreamweaver, a blank document automatically appears.

A. Define Site

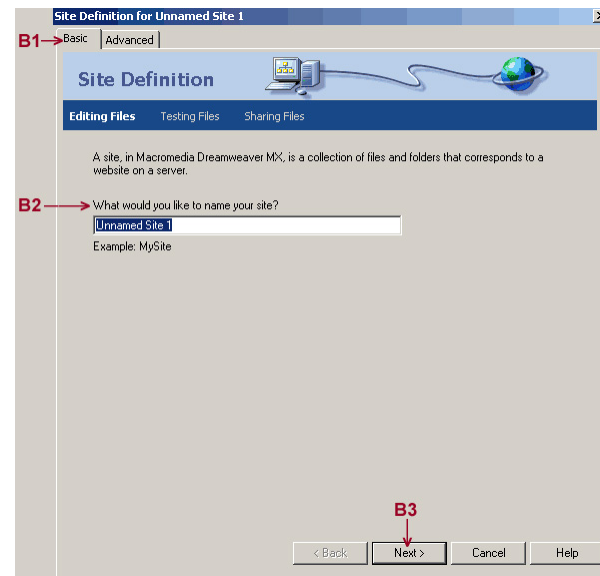
1. Choose > Menu > Site > New Site. (see A1)



B. Site Definition: Editing Files:

Next, a "Site Definition" dialog box will appear; complete the site definition as follows:

1. Click on the "Basic" tab (see B1)
2. What would you like to name your site?
Enter the name of your site (see B2). This is for your reference only, therefore caps and spaces are allowed here.
3. Select or click "Next" (see B3).





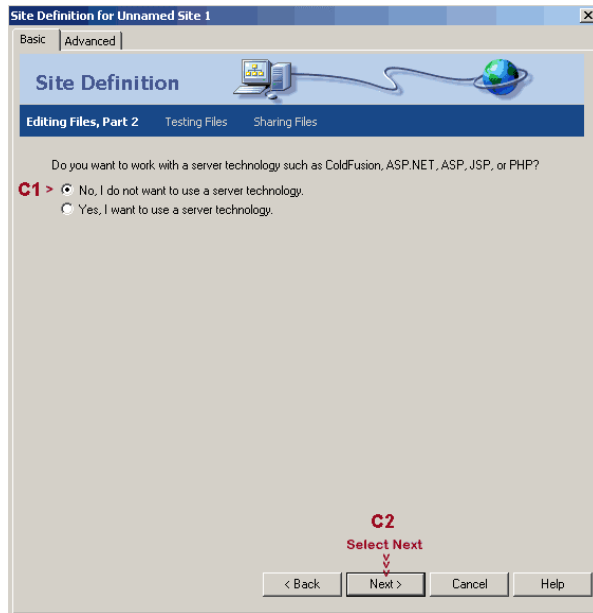
Define Site in Dreamweaver MX - PC

By Theresa Chamberland

02/24/05

C. Site Definition: Editing Files, Part 2

1. Select "No, I do not want to use server technology" (see C1).
2. Select "Next" (see C2).



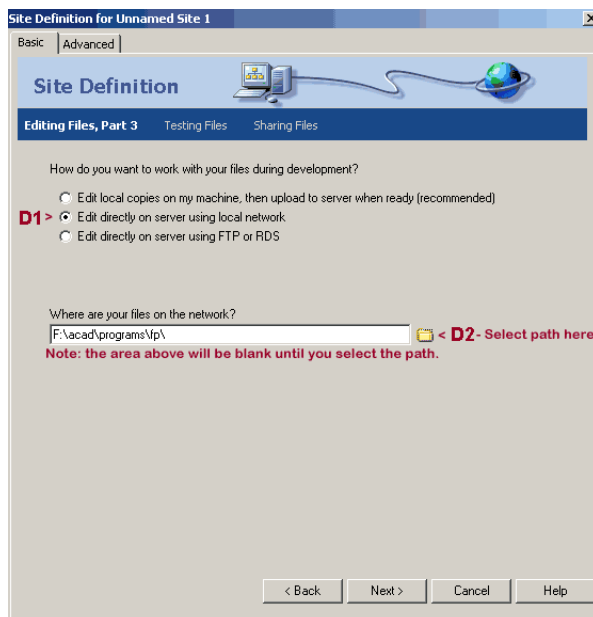
D. Site Definition: Editing Files, Part 3

1. How do you want to work with your files during development?

Select "Edit directly on server using local network" (see D1).

2. Where are your files on the Network?

Select the folder icon (see D2) and pull down the arrow next to box to choose the local root folder for your site; see details (D3) on next page.





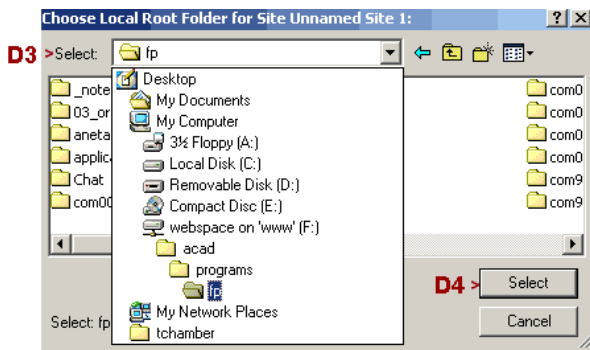
Define Site in Dreamweaver MX - PC

By Theresa Chamberland

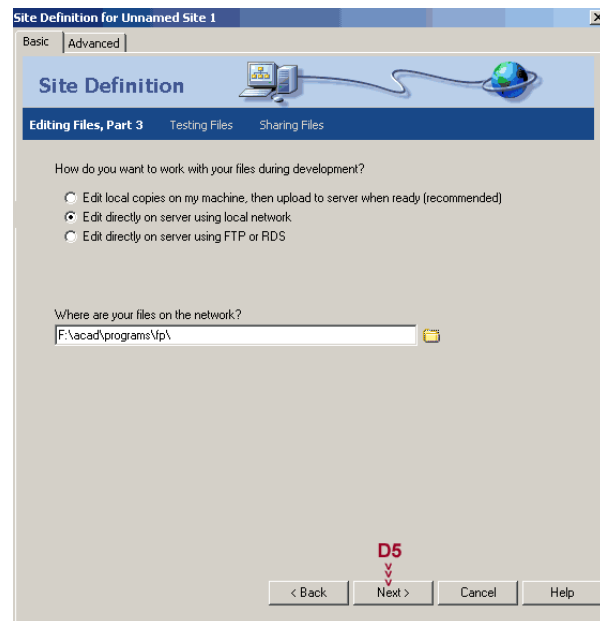
02/24/05

3. From the pull down menu, drill into your Webspaces (see D3).

4. Choose "Select" (see D4).

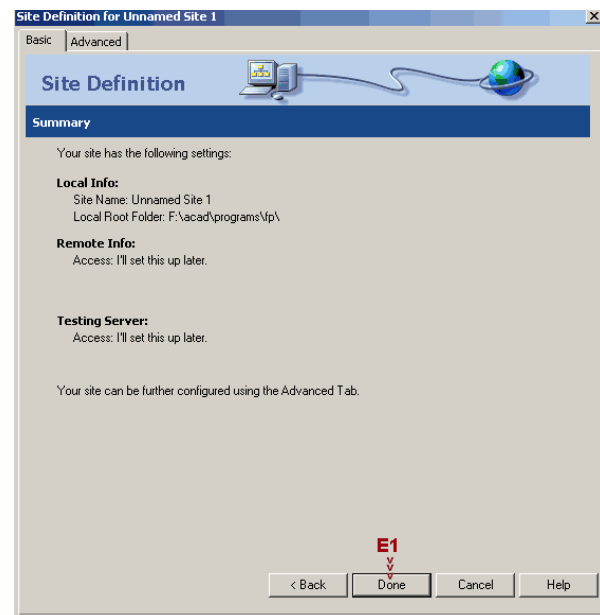


5. Choose "Next" (see D5).



E. Site Definition: Summary

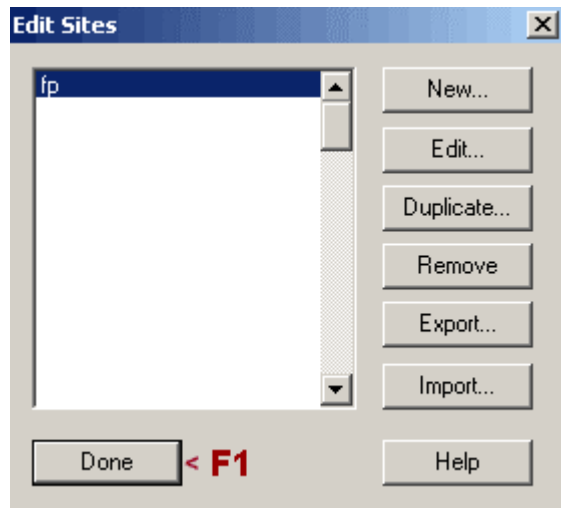
1. Choose "Done" (see E1).



F. Edit Sites

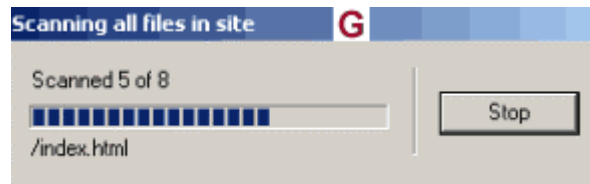
Next, an “Edit Sites” dialogue box will appear again.

1. Choose **Done** (see F1).



G. Scanning Files.

You should see another dialogue box indicating Dreamweaver is “scanning all files in site” (see G). Allow this scanning to take place.



H. Site Map Tool

Use the site Map tool (see H) to view and modify your files.

