

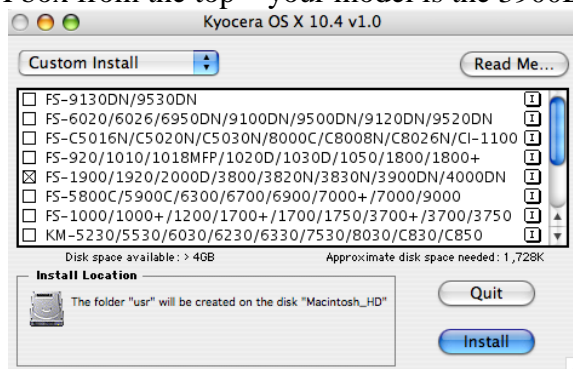
INSTRUCTIONS FOR ADDING A KYOCERA PRINTER – MACINTOSH PLATFORM

Step 1 – Getting the drivers

- Use the GO MENU in FINDER to CONNECT TO SERVER
- Under SERVER ADDRESS: enter MACDIST or select it from the list
- Click on CONNECT
Note: You can log in as a GUEST – no username or password required
- Select the volume NETWORKING and click OK
- An ICON called NETWORKING will appear on your desktop. Open it.
- OPEN the Folder relating to your OS
Note: If you do not know your operating system, go to the BLUE APPLE and select about this MAC
- Copy the folder called KYOCERA_PRINTER to your desktop
- Disconnect from macdist by dragging the NETWORKING ICON to your Trash
Note: The trash will change to an EJECT

Step 2 –Loading the drivers – MAKE SURE THAT PRINTER SETUP UTILITY IS NOT ACTIVE

- Open the folder KYOCERA-PRINTER that you dragged to your desktop.
- Open the OS X folder.
- If your OS is 10.4, use the OS X 10.4 folder
- If your OS is 10.2 or 10.3, use that folder
- Double click on the Kyocera OS X Installer (not the Japanese version)
- You will need to enter you **Computer Password** (not email password)
Note, this is usually your username unless you changed it
- Follow the installer and use the CONTINUE and ACCEPT buttons
- In the INSTALL window you need to select your printer model.
- Click in the FIFTH box from the top – your model is the 3900DN



- Click the INSTALL button.
Note: When finished you will get a dialog that Installation was successful. If you do not, please try to install again.

- Click QUIT

A file called OS X Kyocera Readme will appear on your desktop. This file has lots of information so keep it for future reference.

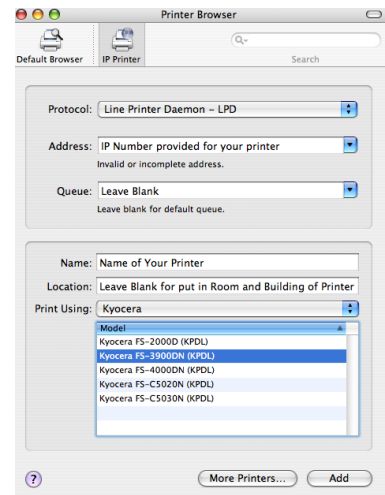
Step 3 – Adding the Printer – DO THIS ONLY AFTER THE PRINTER HAS BEEN INSTALLED

- Go to the **PRINTER ICON** in your **DOCK** (**PRINT CENTER** or **PRINTER SETUP UTILITY**)



- Click the Add button
- In the Printer Browser, Select IP Printer
- For Protocol Select Line Printer Daemon – LPD
- Next to Address – enter your **Printer NAME**. (note: if you do not know this, call X2600)
- You may leave QUEUE blank for 10.4
- For PRINT USING/PRINT MODEL select KYOCERA
- For MODEL select Kyocera FS-3900DN (KPDL)
- Click the ADD button

This picture is for 10.4 only – 10.2 and 10.3 will not have NAME:



Step 4 – Installable Options

- Optional Feeder – should default to Multi Purpose Feeder
- Paper Feeders – Change to Two
- Click CONTINUE

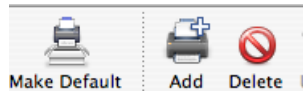
You will now see the printer listed in your Printer List

Step 5 – Making this your default printer

Before deleting the old printer, make sure you can print. When you have successfully printed to the new Kyocera printer, delete the old printer

- Select the **ICON** for your old printer
- Click the **DELETE** button

To make a printer your default, select the Printer in the list and use the **MAKE DEFAULT** button



Congratulations – you have just installed your new printer.