



NOTES:

LEGEND

- Area A
- Area B
- Area C
- Area E
- Area E - Road Closure TBD
- Area F

Mount Holyoke College Campus Conversion Phase 3 Distribution Area Overview

SL-01



Established in 1879

Area A1 Duration
Finish
9/14/25

NOTES:

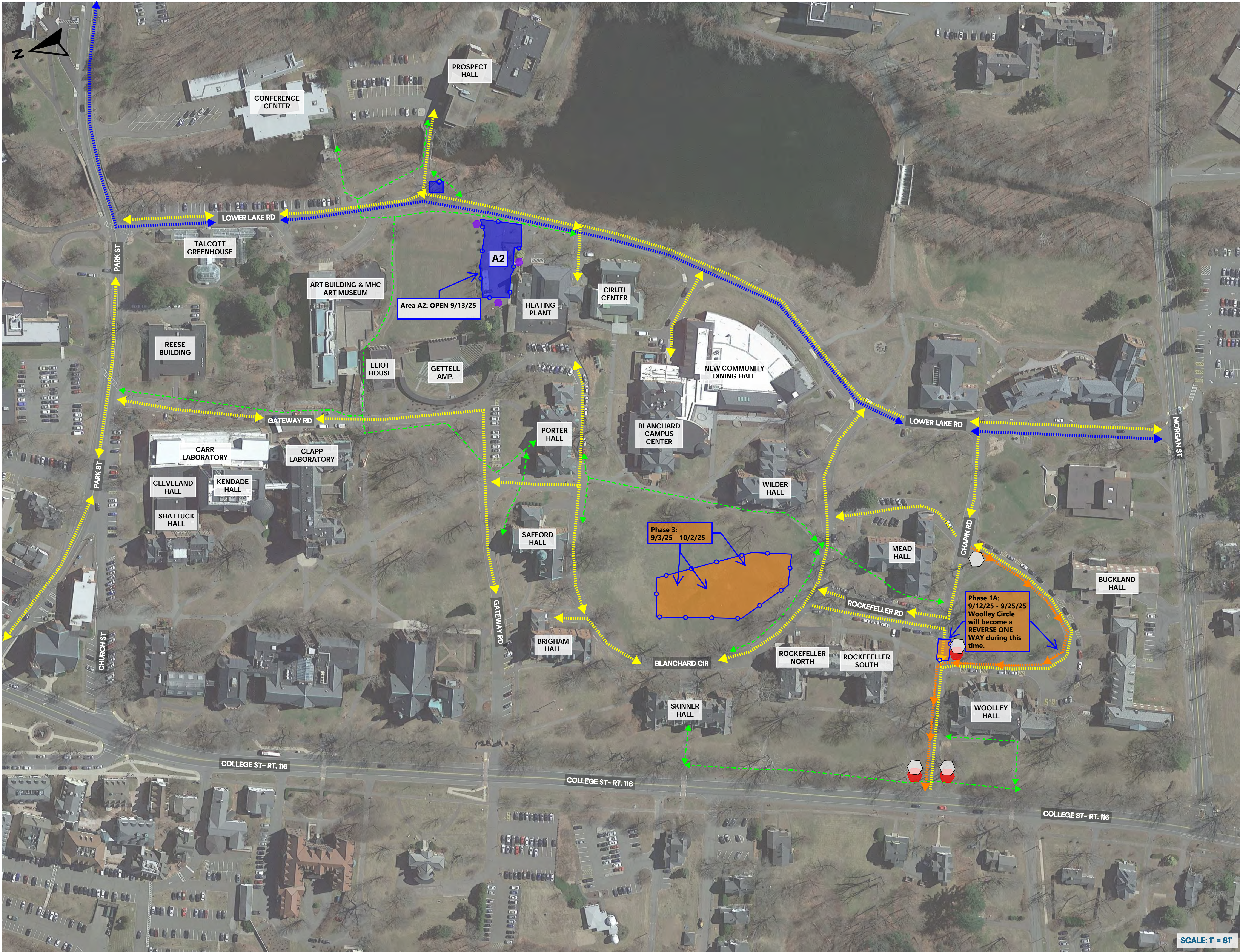
Mechanical install ongoing
Area Opens 9/14/25
Paving Binder 10/14/25

LEGEND

- Completed Chilled Water
- Completed Hot Water
- Construction Traffic During Construction
- Current Chilled Water - Area A
- Current Hot Water - Area A & C1
- Fire Department Access
- Future Chilled Water
- Future Hot Water
- Pedestrian Traffic During Construction
- Phase Delineation
- Sign - "Sidewalk Closed"
- Site Fence
- Tree Protection
- Vehicular Traffic During Construction
- "No Thru Traffic Access to:"
- Sign - "No Thru Traffic"
- Do Not Enter
- One Way
- Road Closed

Mount Holyoke College
Campus Conversion
Phase 3 Distribution
Area A1 & A2

SL-02



Established in 1879
Area A1 Duratio
Finish
9/14/25

NOTES:

Mechanical install ongoing

Area A2 Opens 9/14/25

AREA A2 Paving Binder 10/14/25

Phase 1 & 2 Repairs Continue (PHASE 3 and 1A)

MARY WOOLLEY CIRCLE REVERSE 1 WAY

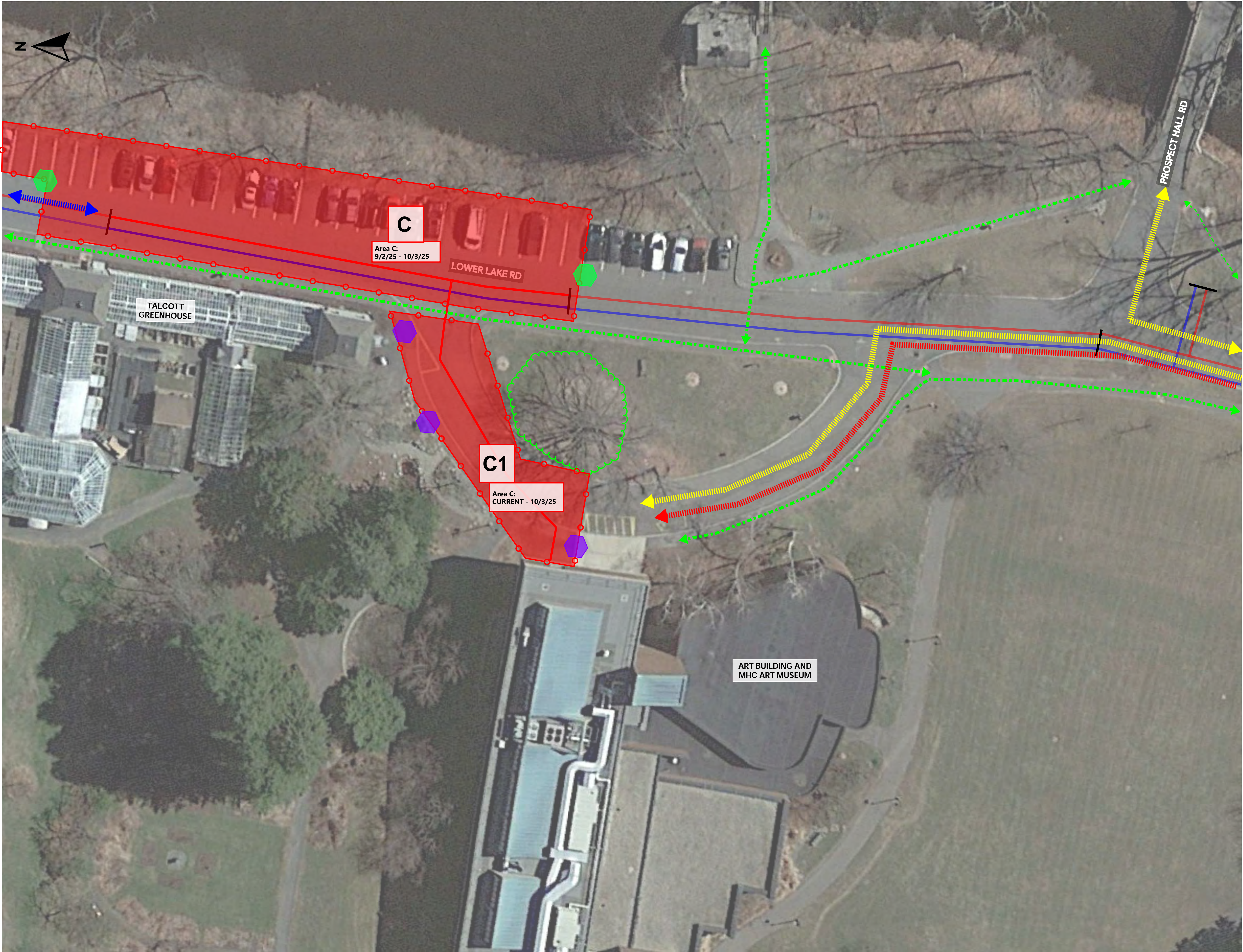
LEGEND

- Sign - "Sidewalk Closed"
- Sign - "No Thru Traffic"
- Sign - "No Thru Traffic"
- Vehicular Traffic During Construction
- Construction Traffic During Construction
- Pedestrian Traffic During Construction
- REVERSE Traffic During Construction
- Do Not Enter
- One Way
- Road Closed

Mount Holyoke College
Campus Conversion
Phase 3 Distribution
Area A1 & A2 - Traffic Plan

SL-02.1

SCALE: 1" = 81'



Established in 1879

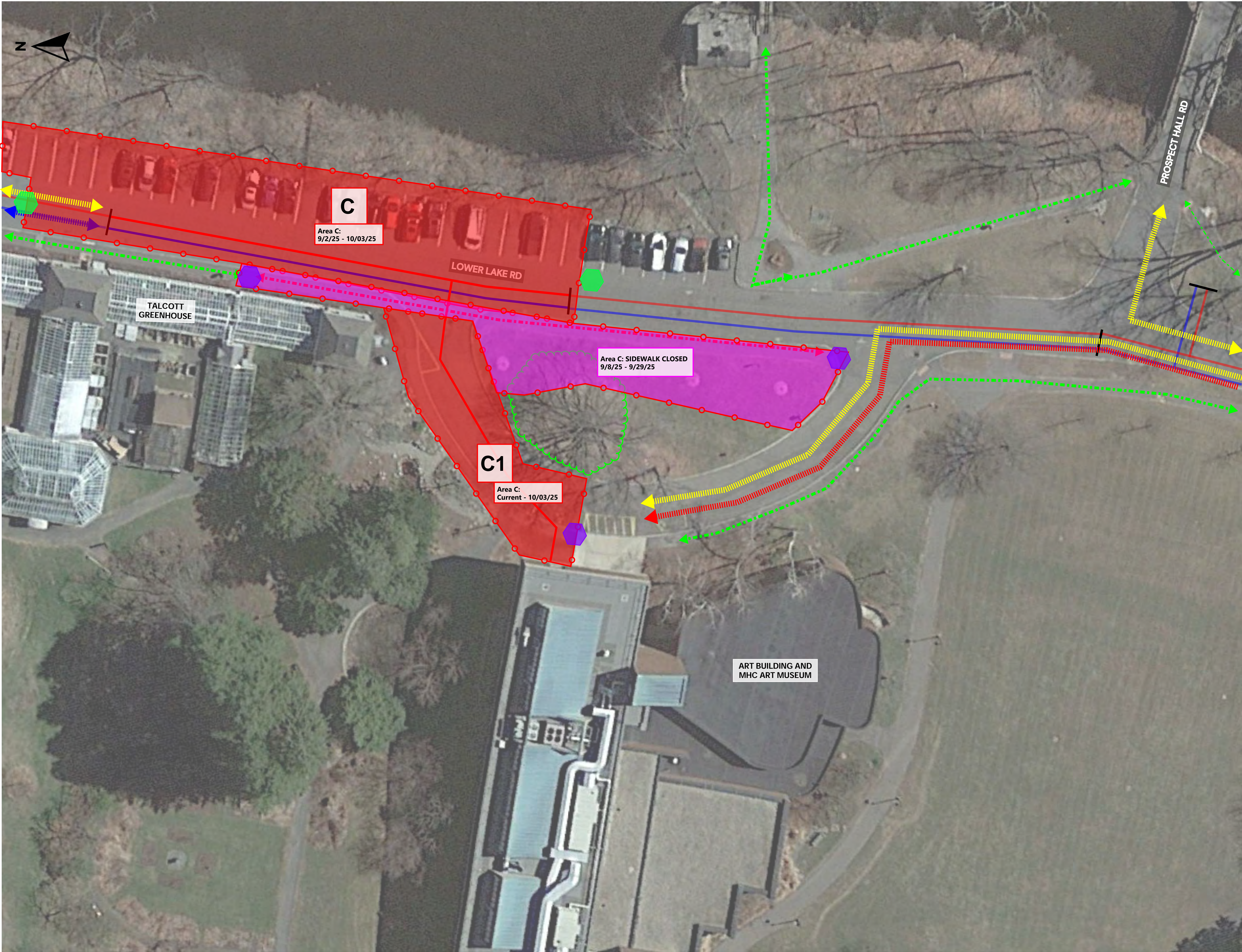
Area C Duration
9/2/25 - 10/03/25

NOTES:
AREA C and C1 WILL OPEN FOR ACCESS ON 10/4/25
AREA C and C1 PAVING BINDER ON 10/14/25

- LEGEND**
- Completed Chilled Water
 - Completed Hot Water
 - Construction Traffic During Construction
 - Current Chilled Water - Area A
 - Current Hot Water - Area A & C1
 - Fire Department Access
 - Future Chilled Water
 - Future Hot Water
 - Pedestrian Traffic During Construction
 - Phase Delineation
 - Sign - "Sidewalk Closed"
 - Site Fence
 - Tree Protection
 - Vehicular Traffic During Construction
 - Sign - "No Thru Traffic Access to:"
 - Sign - "No Thru Traffic"
 - Do Not Enter
 - One Way
 - Road Closed

Mount Holyoke College
Campus Conversion
Phase 3 Distribution
Area C

SL-04



Established in 1879

Area C Duration
SIDEWALK CLOSED
9/8/25 - 9/29/25

NOTES:

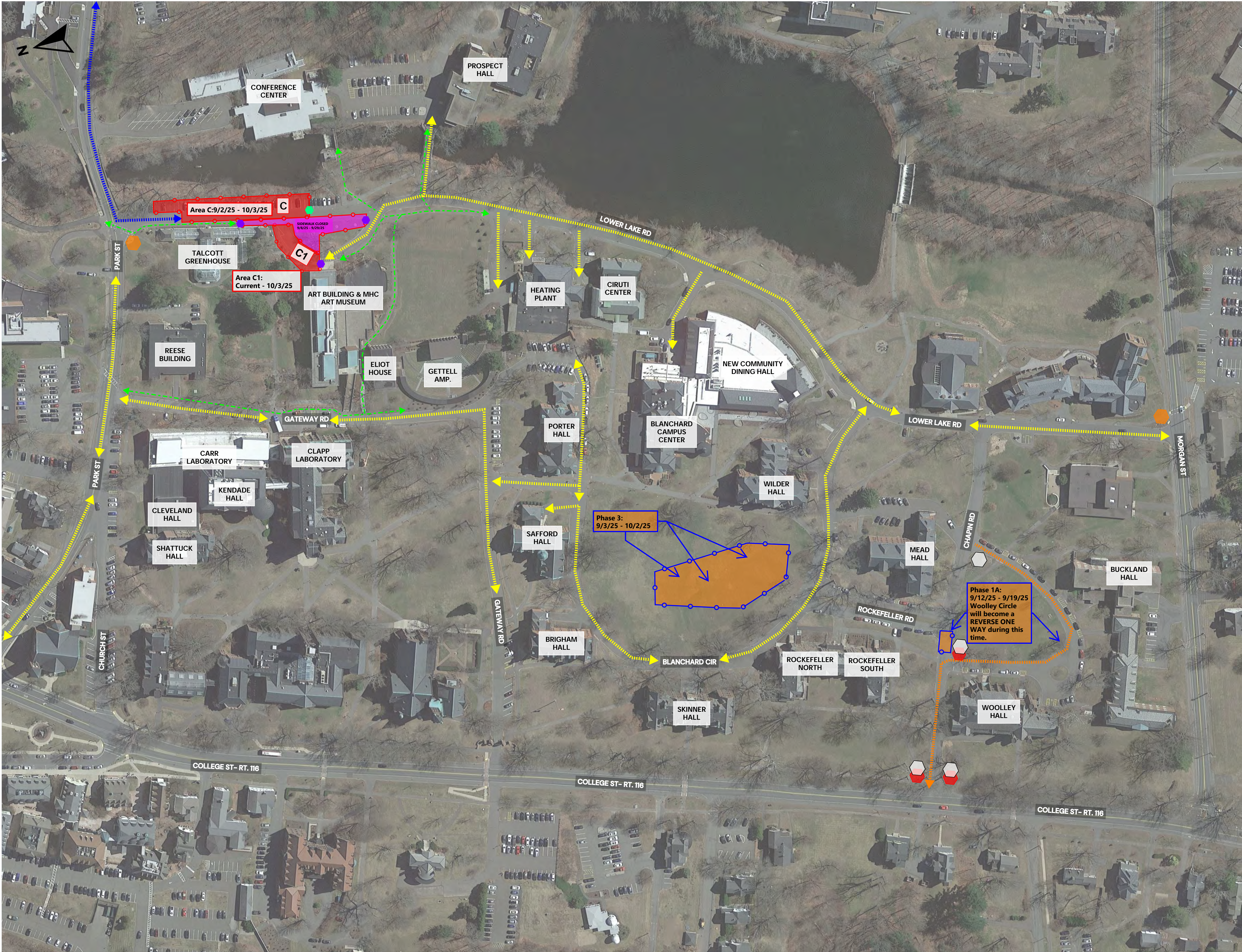
SIDEWALK CLOSED 9/5/25 to 9/26/25

LEGEND

- Completed Chilled Water
- Completed Hot Water
- Construction Traffic During Construction
- Current Chilled Water - Area A
- Current Hot Water - Area A & C1
- Fire Department Access
- Future Chilled Water
- Future Hot Water
- Pedestrian Traffic During Construction
- Phase Delineation
- Sign - "Sidewalk Closed"
- Site Fence
- Tree Protection
- Vehicular Traffic During Construction
- "No Thru Traffic Access to:"
- Sign - "No Thru Traffic"
- Do Not Enter
- One Way
- Road Closed

Mount Holyoke College
Campus Conversion
Phase 3 Distribution
Area C

SL-04



Established in 1879

Area C Duration
9/2/25 - 10/3/25

NOTES:

LEGEND

- Sign - "Sidewalk Closed"
- Sign - "No Thru Traffic"
- Sign - "No Thru Traffic"
- Vehicular Traffic During Construction
- Construction Traffic During Construction
- Pedestrian Traffic During Construction
- REVERSE Traffic During Construction
- Do Not Enter
- One Way
- Road Closed

Mount Holyoke College
Campus Conversion
Phase 3 Distribution
Area C - Traffic Plan

SL-04.1



Established in 1879

Area B1 Duration
10/06/25- 10/14/25

NOTES:

Mobilize 10/6/25

Demo Area

Restore Area

Pave Binder 10/14/25

LEGEND

- Completed Chilled Water
- Completed Hot Water
- Construction Traffic During Construction
- Current Chilled Water - Area A
- Current Hot Water - Area A & C1
- Fire Department Access
- Future Chilled Water
- Future Hot Water
- Pedestrian Traffic During Construction
- Phase Delineation
- Sign - "Sidewalk Closed"
- Site Fence
- Tree Protection
- Vehicular Traffic During Construction
- "No Thru Traffic Access to:"
- Sign - "No Thru Traffic"
- Do Not Enter
- One Way
- Road Closed

Mount Holyoke College
Campus Conversion
Phase 3 Distribution
Area B

SL-03



Established in 1879

Area B1 Duration
10/06/25 - 10/14/25

NOTES:

Mobilize 10/6/25

Demo Area

Restore Area

Pave Binder 10/14/25

LEGEND

- Sign - "Sidewalk Closed"
- Sign - "No Thru Traffic"
- Sign - "No Thru Traffic"
- Vehicular Traffic During Construction
- Construction Traffic During Construction
- Pedestrian Traffic During Construction
- REVERSE Traffic During Construction
- Do Not Enter
- One Way
- Road Closed

Mount Holyoke College
Campus Conversion
Phase 3 Distribution
Area A2 & B - Traffic Plan

SL-03.1





Area C Duration
9/2/25 - 10/3/25

Area E Duration
9/24/25 - 11/22/25

NOTES:
PARK STREET CLOSED FOR 3 WEEKS IN OC
TENATIVELY 10/6/25 TO 10/25/25

- LEGEND**
- Sign - "Sidewalk Closed"
 - Sign - "No Thru Traffic"
 - Sign - "No Thru Traffic"
 - Vehicular Traffic During Construction
 - Construction Traffic During Construction
 - Pedestrian Traffic During Construction
 - REVERSE Traffic During Construction
 - Do Not Enter
 - One Way
 - Road Closed





NOTES:

- Police detail on both sides of road closure.

-ROAD CLOSED - PARK STREET

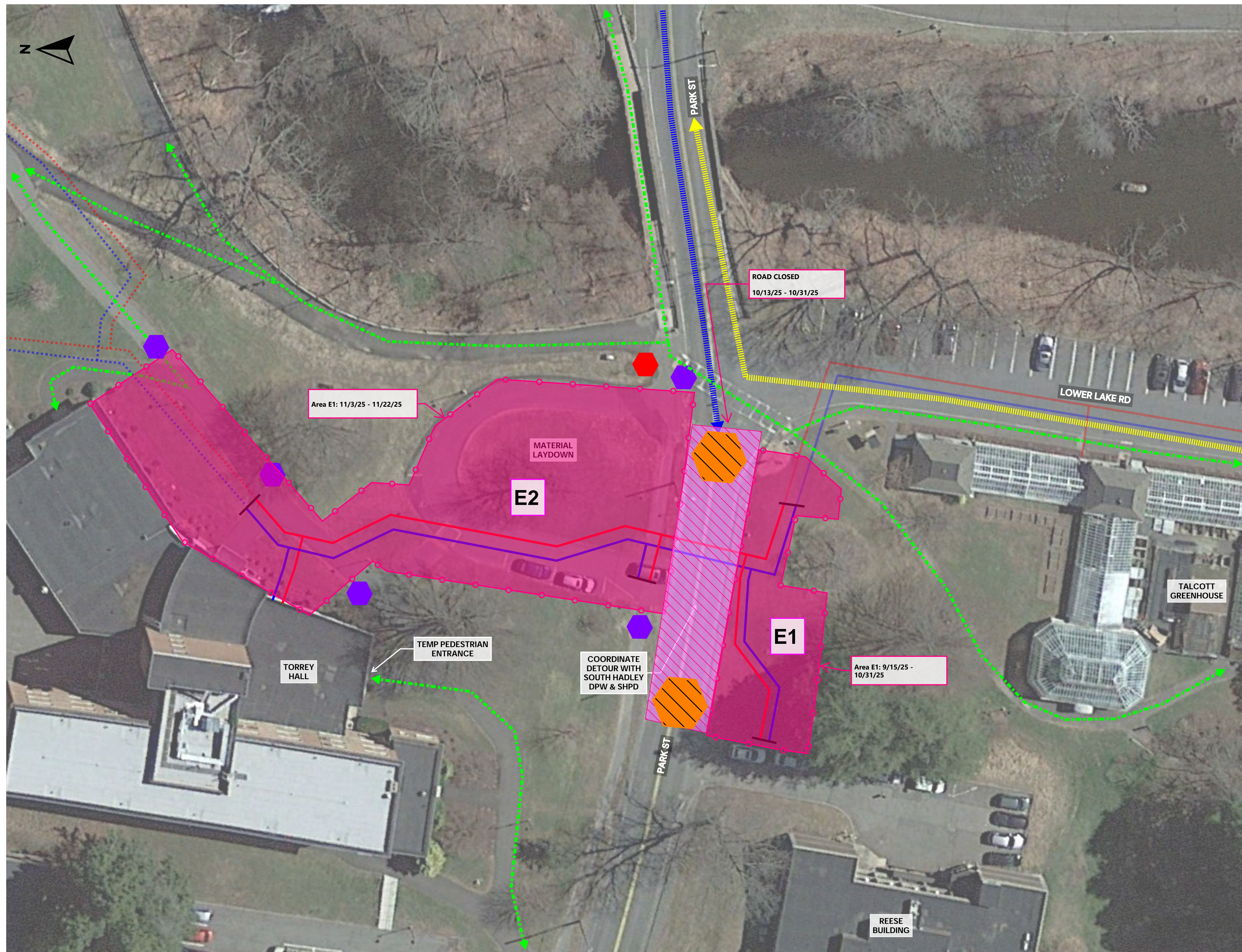
- **Sdewalk closed during road closure**

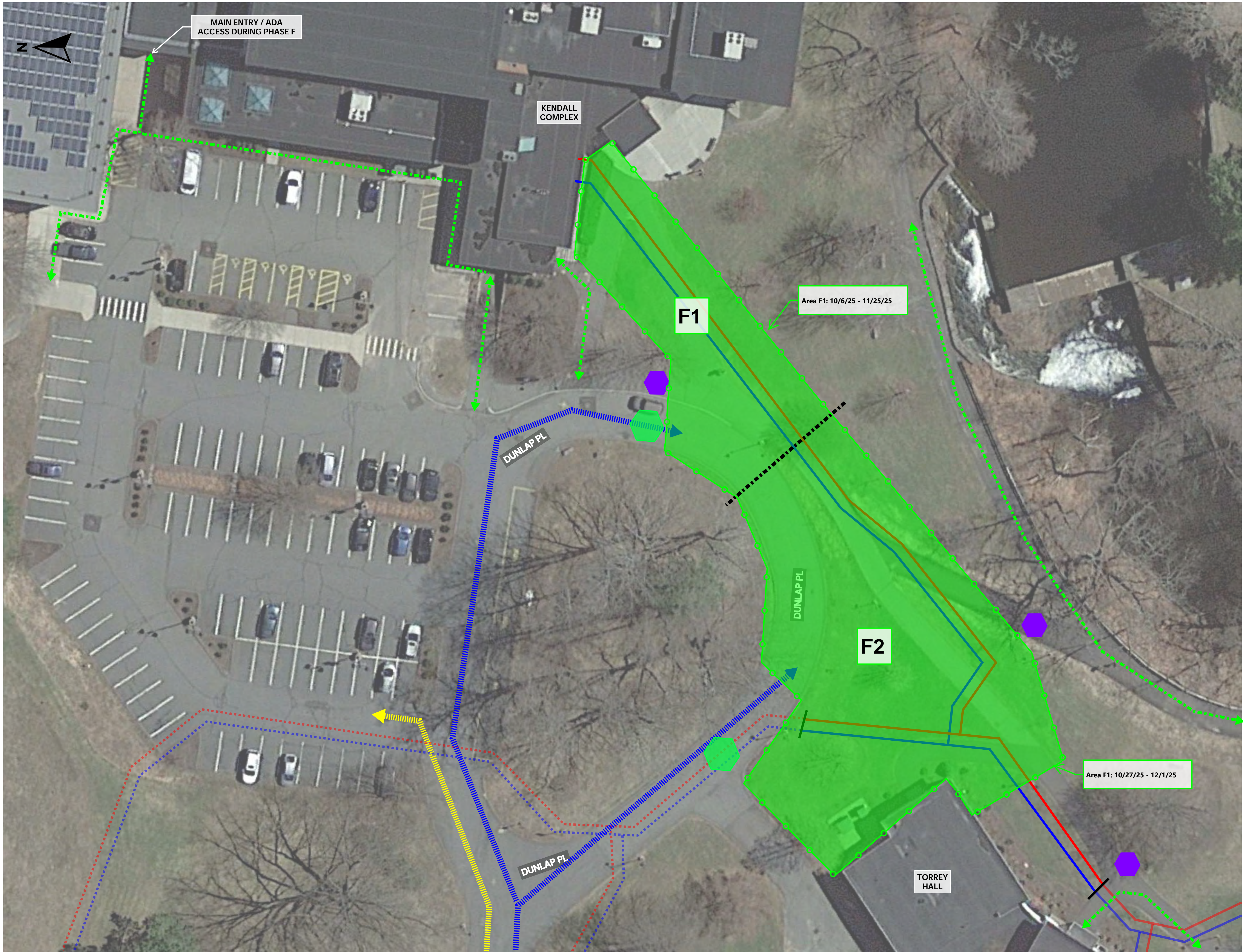
LEGEND

- | | |
|---|--|
|  | Completed Chilled Water |
|  | Completed Hot Water |
|  | Construction Traffic During Construction |
|  | Current Chilled Water - Area A |
|  | Current Hot Water - Area A & C1 |
|  | Fire Department Access |
|  | Future Chilled Water |
|  | Future Hot Water |
|  | Pedestrian Traffic During Construction |
|  | Phase Delineation |
|  | Sign - "Sidewalk Closed" |
|  | Site Fence |
|  | Tree Protection |
|  | Vehicular Traffic During Construction |
|  | Sign - "No Thru Traffic Access to:" |
|  | Sign - "No Thru Traffic" |
|  | Do Not Enter |
|  | One Way |
|  | Road Closed |

Mount Holyoke College Campus Conversion Phase 3 Distribution Area E

SL-06





Established in 1879

Area F Duration
10/06/25 - 12/1/25

NOTES:

LEGEND

- Completed Chilled Water
- Completed Hot Water
- Construction Traffic During Construction
- Current Chilled Water - Area A
- Current Hot Water - Area A & C1
- Fire Department Access
- Future Chilled Water
- Future Hot Water
- Pedestrian Traffic During Construction
- Phase Delineation
- Sign - "Sidewalk Closed"
- Site Fence
- Tree Protection
- Vehicular Traffic During Construction
- "No Thru Traffic Access to:"
- Sign - "No Thru Traffic"
- Do Not Enter
- One Way
- Road Closed

Mount Holyoke College
Campus Conversion
Phase 3 Distribution
Area F

SL-07



Established in 1879

Area E Duration
9/24/25 - 11/22/25

Area F Duration
10/6/25 - 12/1/25

NOTES:

PARK STREET CLOSED 10/6/25 to 10/24/25

LEGEND

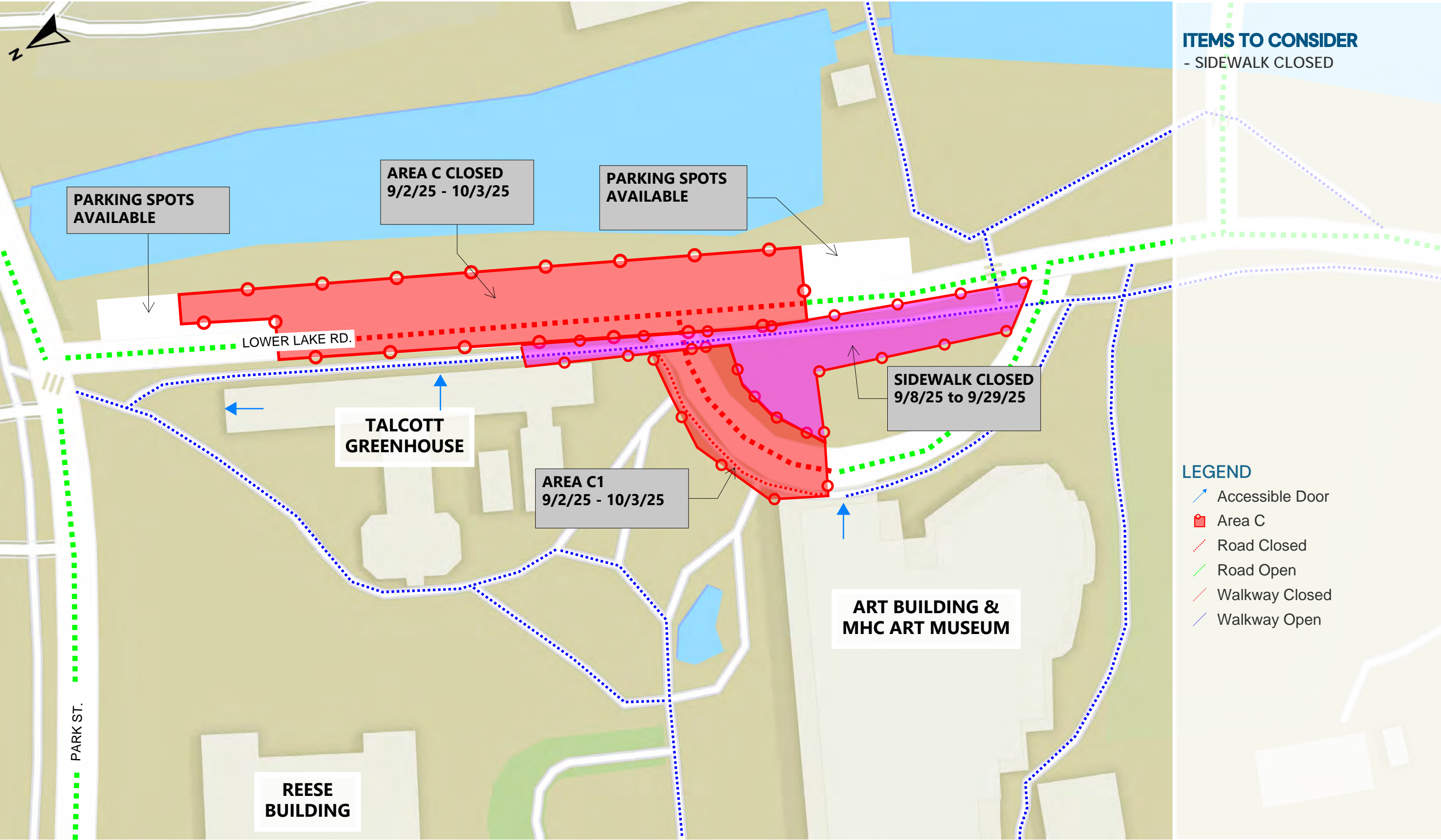
- Sign - "Sidewalk Closed"
- Sign - "No Thru Traffic"
- Sign - "No Thru Traffic"
- Vehicular Traffic During Construction
- Construction Traffic During Construction
- Pedestrian Traffic During Construction
- REVERSE Traffic During Construction
- Do Not Enter
- One Way
- Road Closed

Mount Holyoke College
Campus Conversion
Phase 3 Distribution
Area F & E - Traffic Plan

SL-07.1

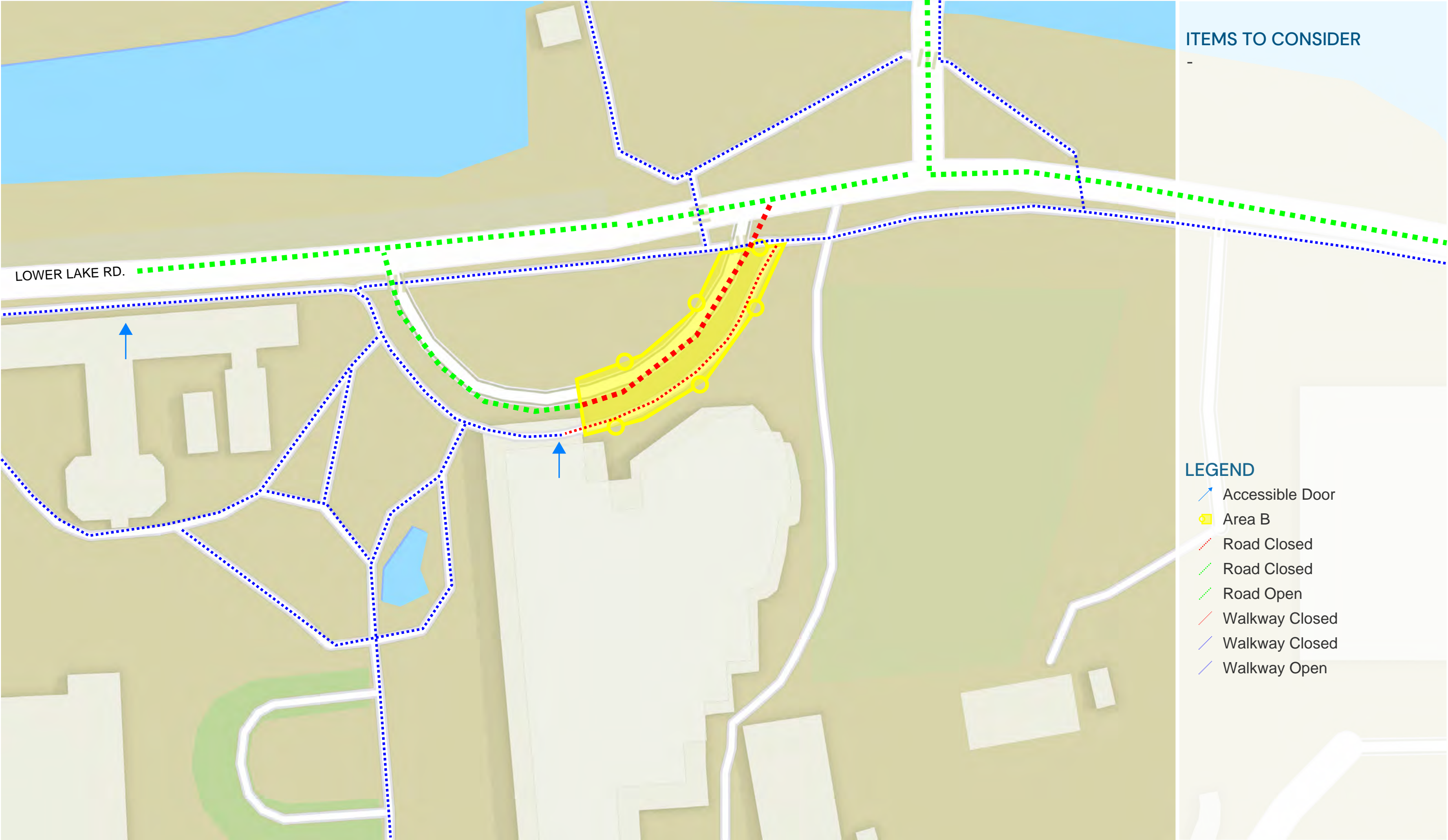
Mount Holyoke College | Logistics Plan - Area C

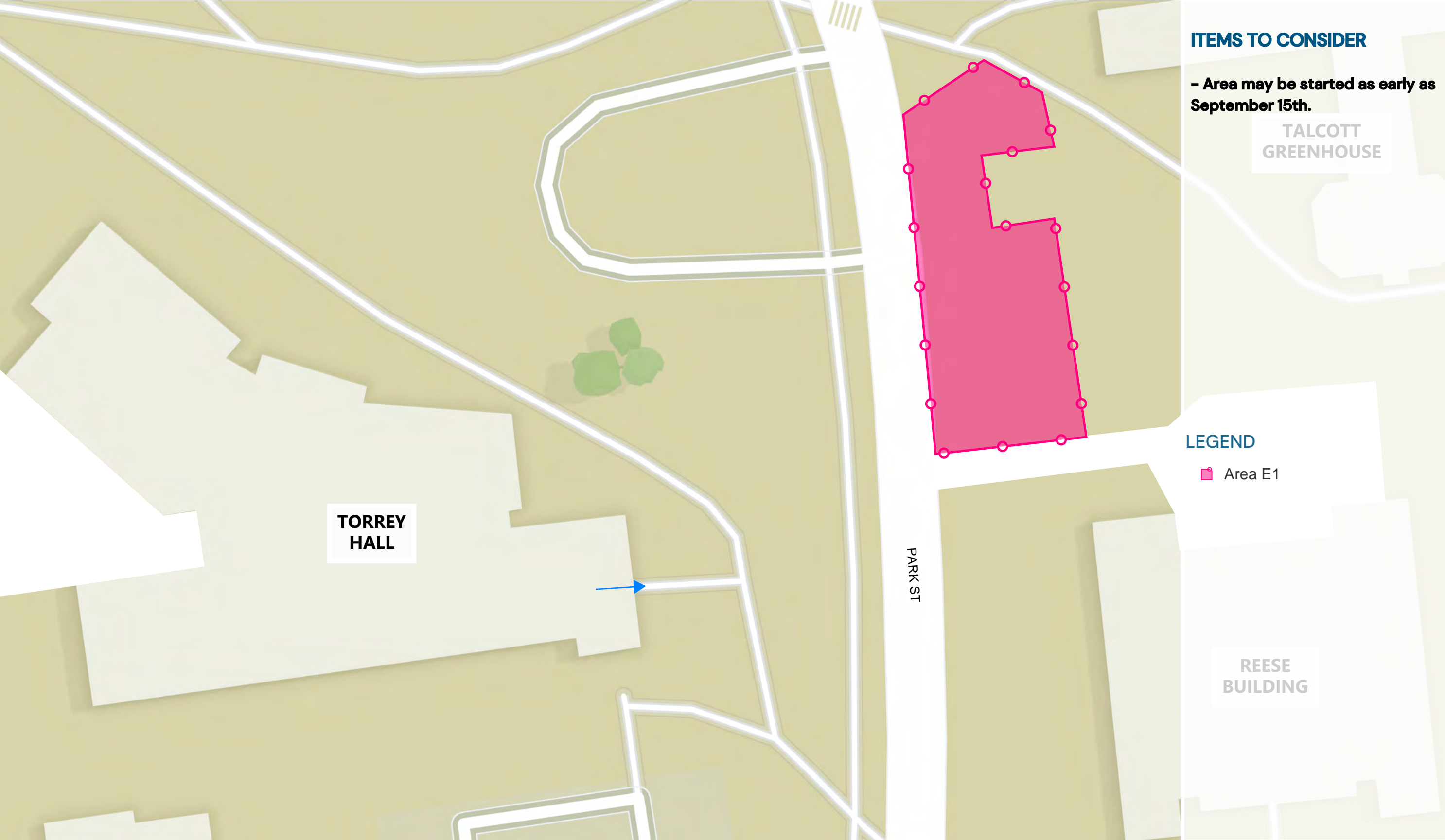
September 2 2025 to October 3 2025

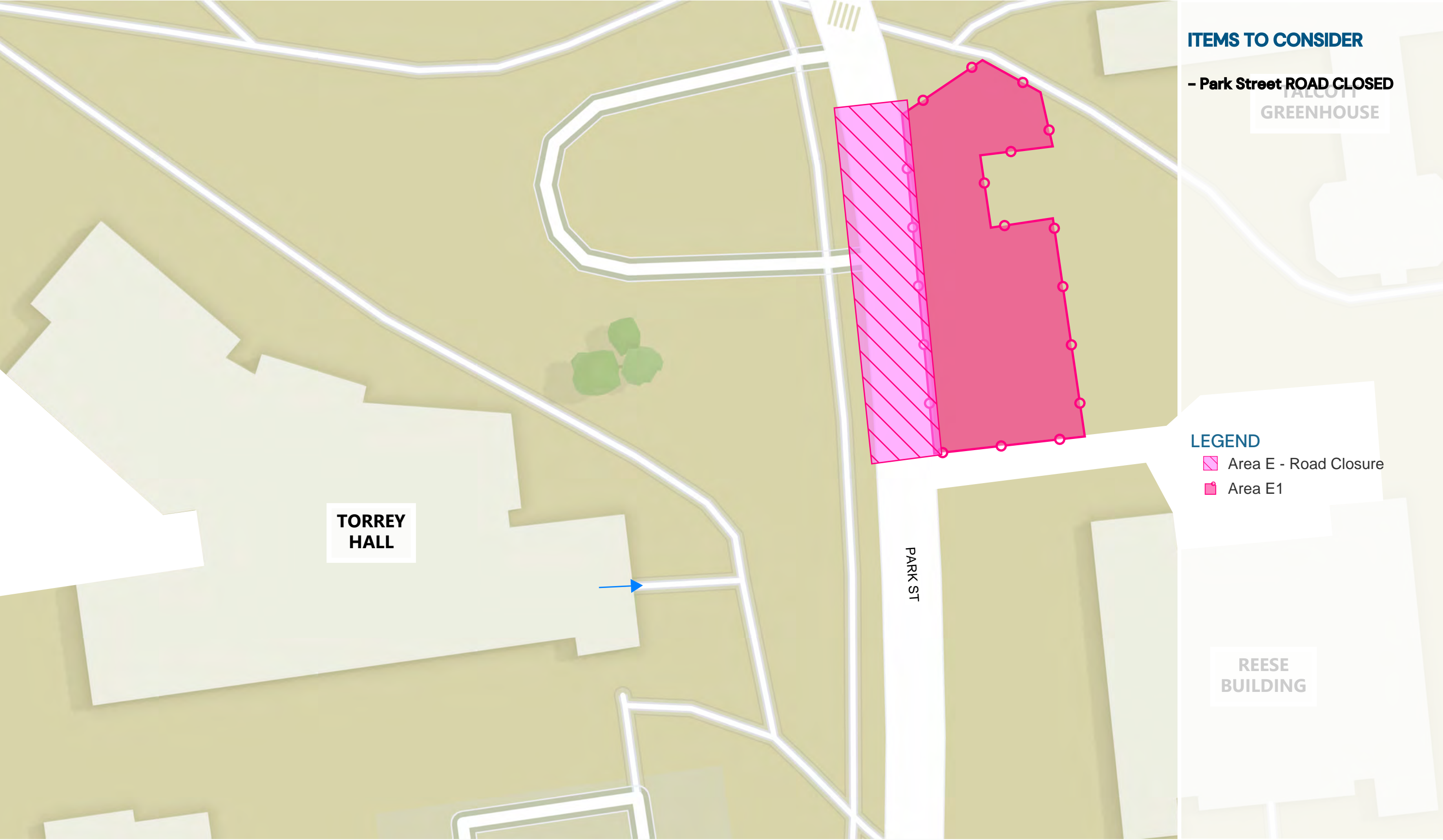


Mount Holyoke College | Logistics Plan - Area B1

October 6 2025 to October 14 2025

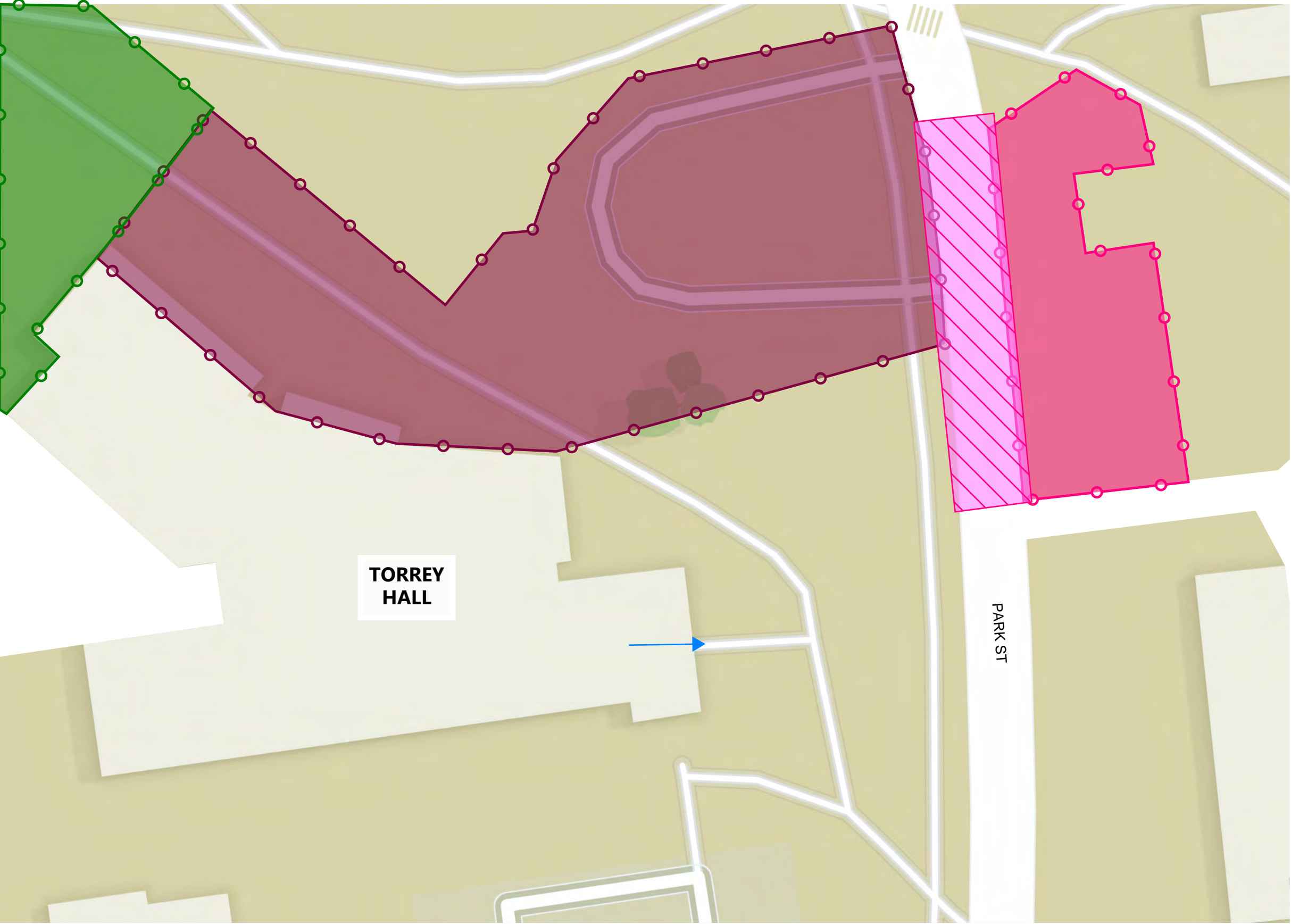






Mount Holyoke College | Logistics Plan - Area E

October 20th, 2025 - October 31st, 2025



ITEMS TO CONSIDER

- Park Street Road Closed
- Torrey Hall ADA Access at South Entrance
- Sidewalk CLOSED on Park Street between Horseshoe driveway
- Horseshoe Driveway CLOSED

LEGEND

- Area E - Road Closure
- Area E1
- Area E2
- Area F2



