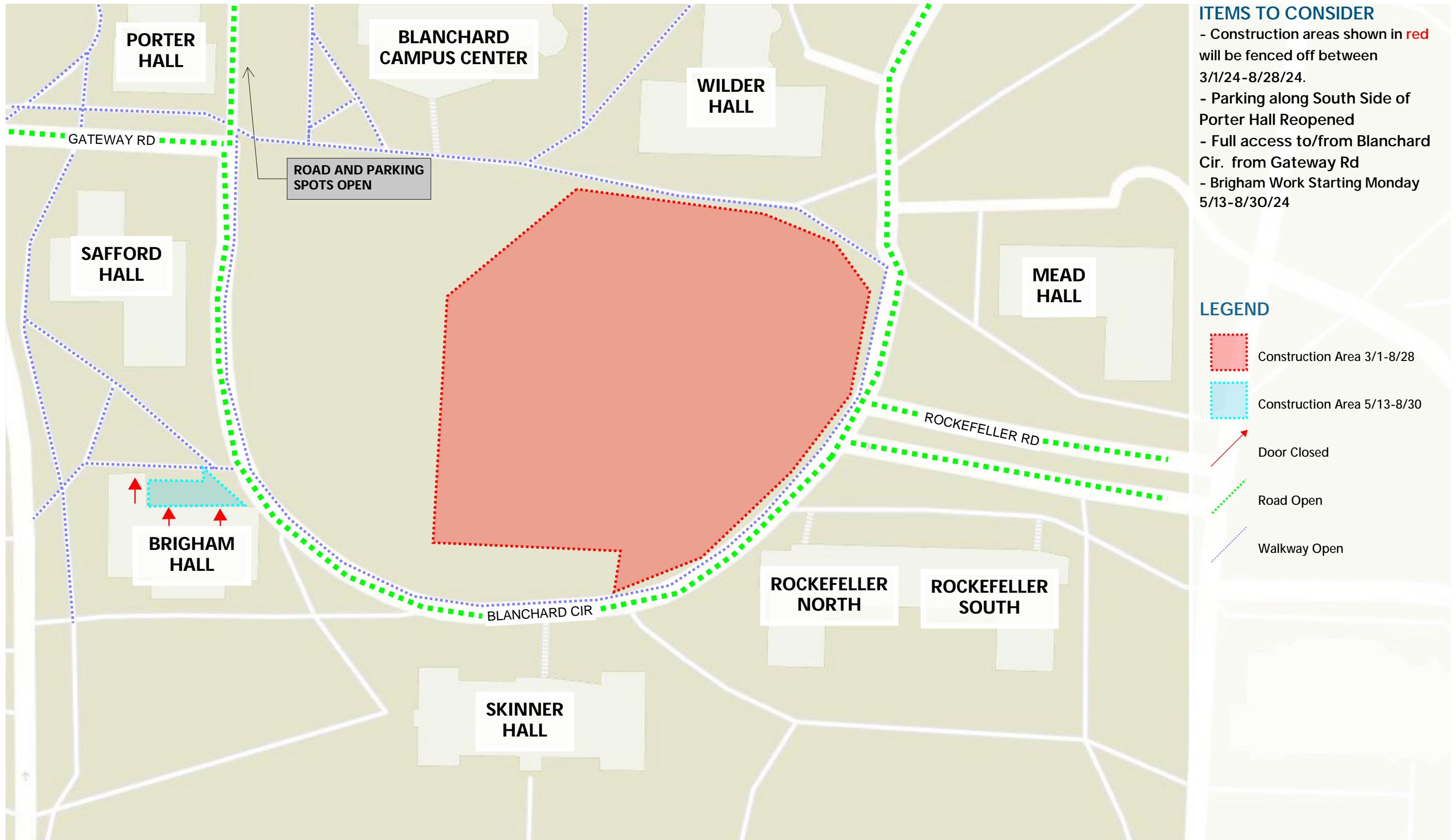


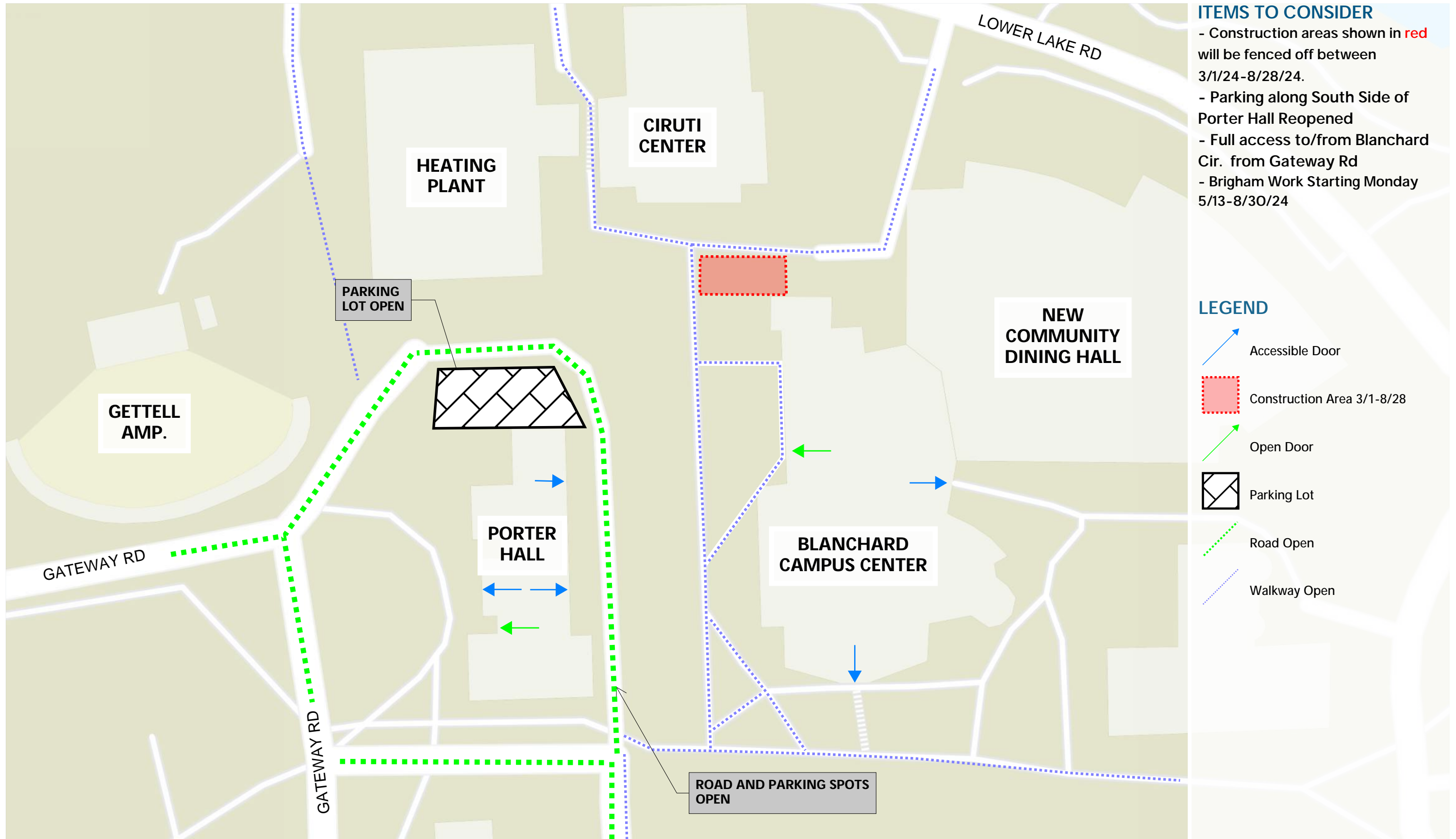
Mount Holyoke College Campus Conversion | Logistics Plan - Skinner Green

May 13, 2024



Mount Holyoke College Campus Conversion | Logistics Plan - Porter Hall







May 13, 2024



ITEMS TO CONSIDER

- Construction areas shown in red will be fenced off between 3/1/24-8/28/24.
- Parking along South Side of Porter Hall Reopened
- Full access to/from Blanchard Cir. from Gateway Rd
- Brigham Work Starting Monday 5/13-8/30/24

LEGEND

-  Accessible Door
-  Construction Area 3/1-8/28
-  Open Door
-  Parking Lot
-  Road Open
-  Walkway Open