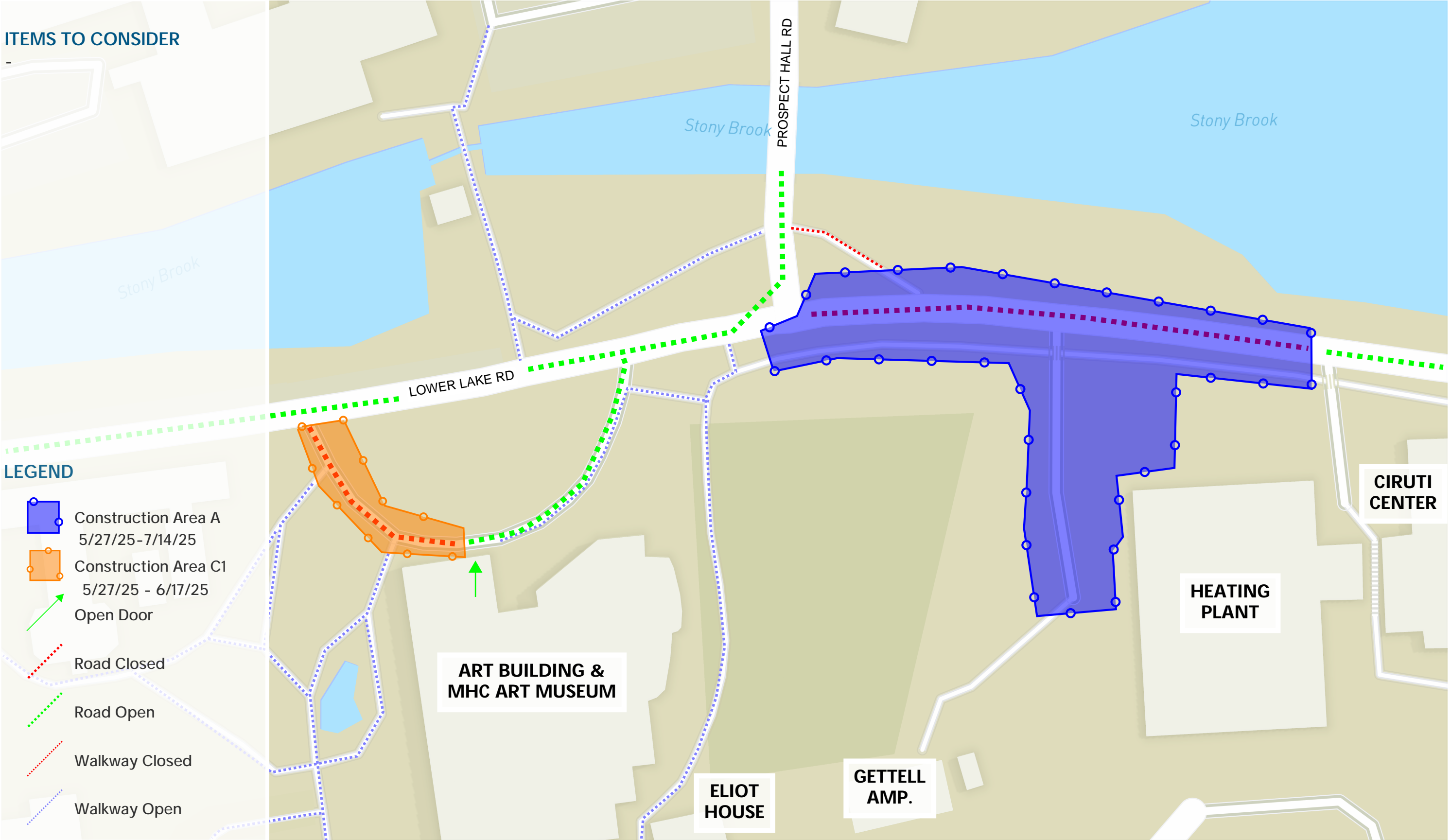


Mount Holyoke College Campus Conversion | Area A & C1 Logisitcs





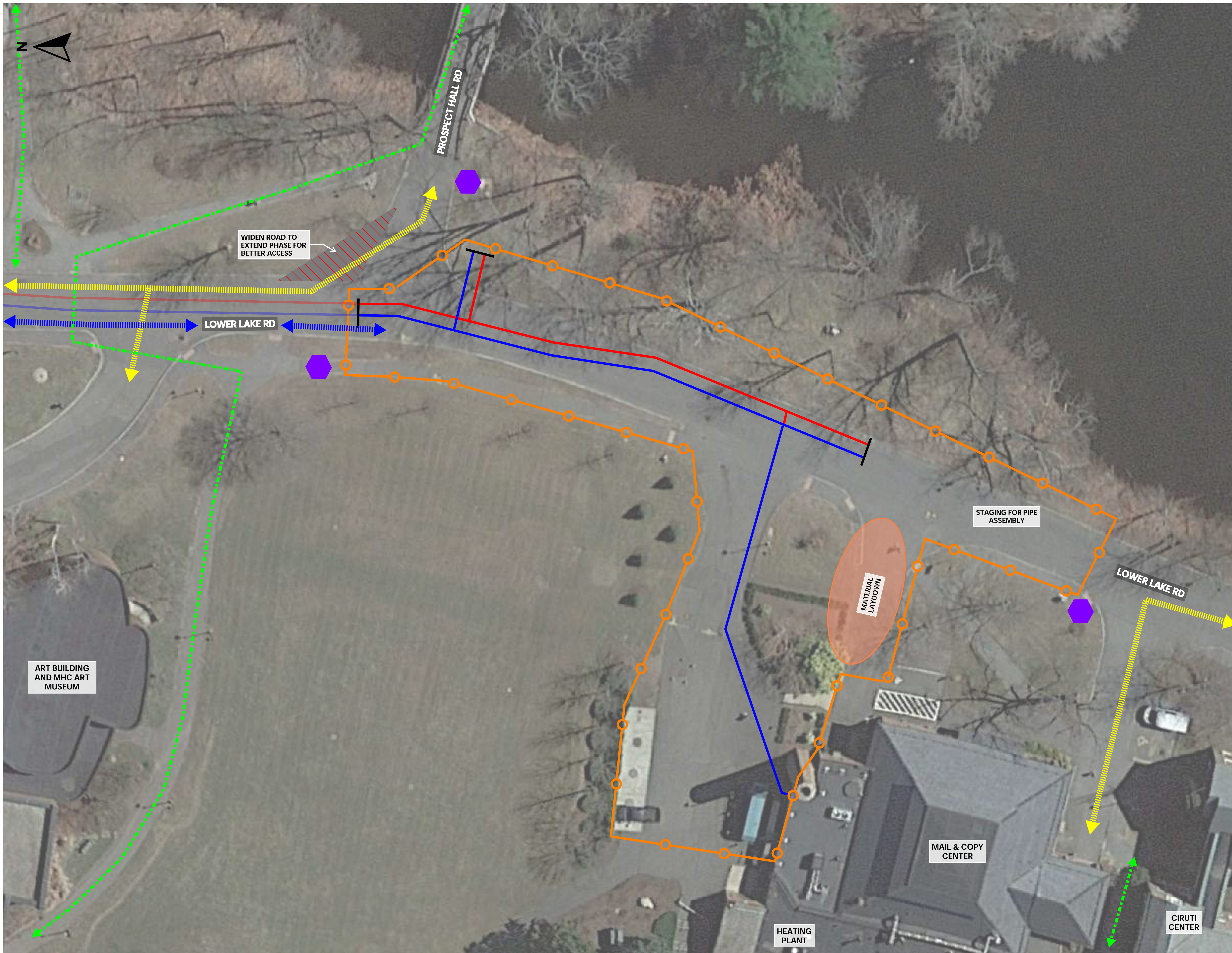
Established in 1879

Area A Duration
5/27/25 - 7/14/25

NOTES:

LEGEND

- Completed Chilled Water
- Completed Hot Water
- Construction Traffic During Construction
- Current Chilled Water - Area A
- Current Hot Water - Area A
- Pedestrian Traffic During Construction
- Sign - "Sidewalk Closed"
- Vehicular Traffic During Construction



Mount Holyoke College
Campus Conversion
Phase 3 Distribution
Area A

SL-02

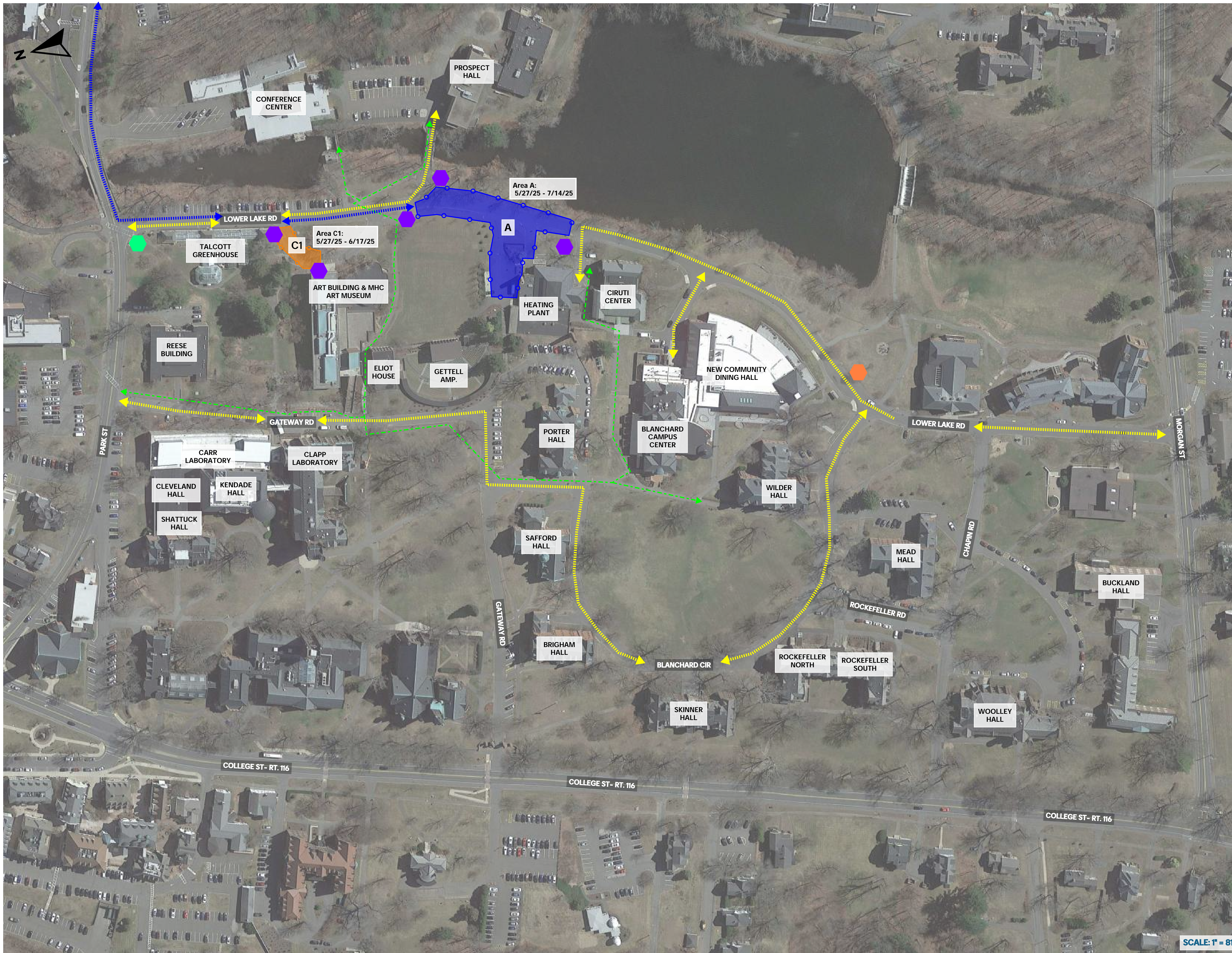


Established in 1879









Area A Duration
5/27/25 - 7/14/25

Area C1 Duration
5/27/25 - 6/17/25

NOTES:



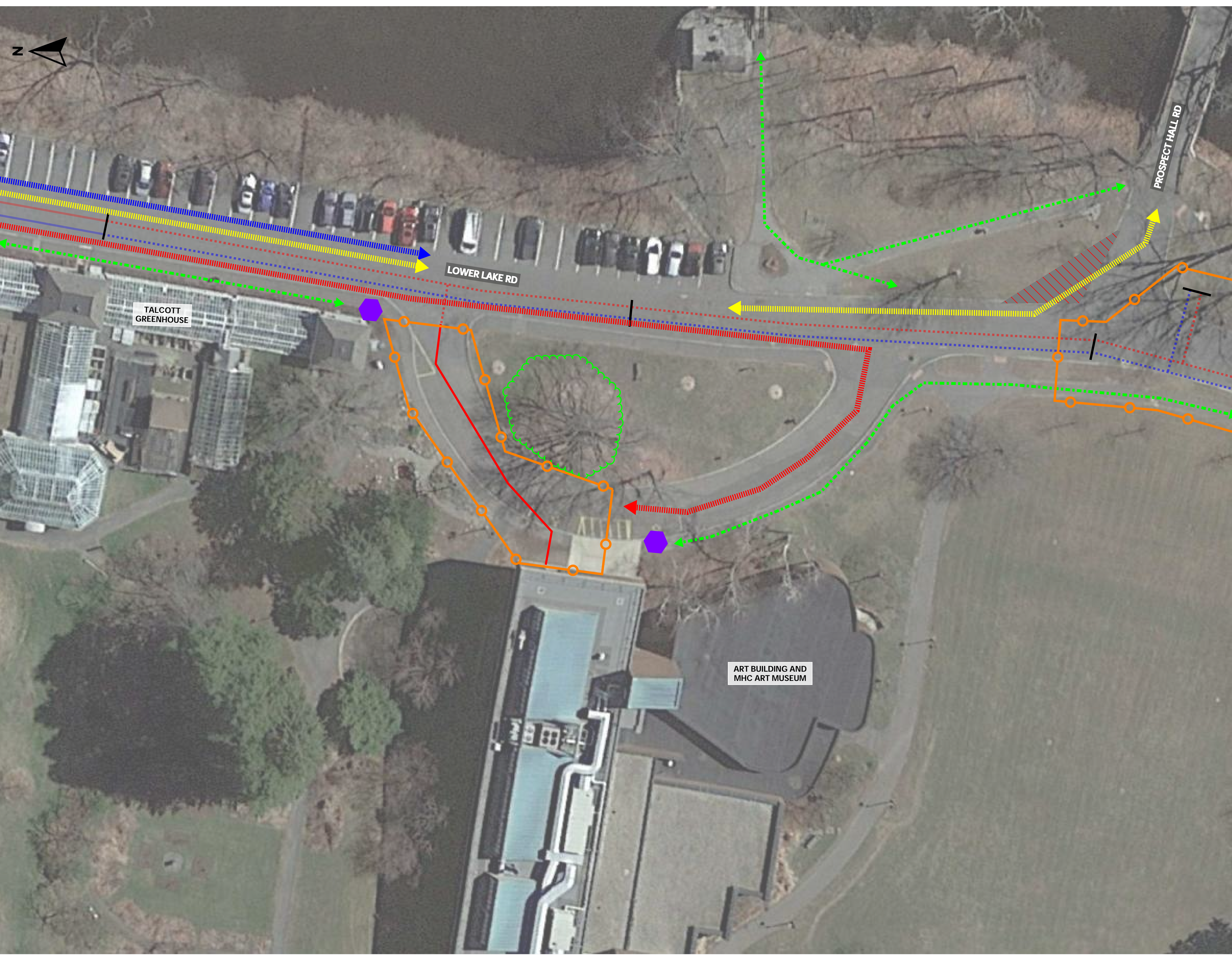
LEGEND

-  Area A
-  Area C1
-  Construction Traffic During Construction
-  Pedestrian Traffic During Construction
-  Sign - "No Thru Traffic" and "Sidewalk Closed"
-  Sign -
-  Sign - "No Thru Traffic"
-  Vehicular Traffic During Construction

Mount Holyoke College
Campus Conversion
Phase 3 Distribution
Area A & C1 - Traffic Plan

SL-02.1

SCALE: 1" = 81'



Established in 1879

Area C1 Duration
5/27/25 - 6/17/25

NOTES:

LEGEND

- Completed Chilled Water
- Completed Hot Water
- Construction Traffic During Construction
- Current Hot Water - Area C
- Fire Department Access
- Future Chilled Water
- Future Hot Water
- Pedestrian Traffic During Construction
- Phase Delineation
- Sign - "Sidewalk Closed"
- Site Fence
- Tree Protection
- Vehicular Traffic During Construction

Mount Holyoke College
Campus Conversion
Phase 3 Distribution
Area C1

SL-04



Established in 1879

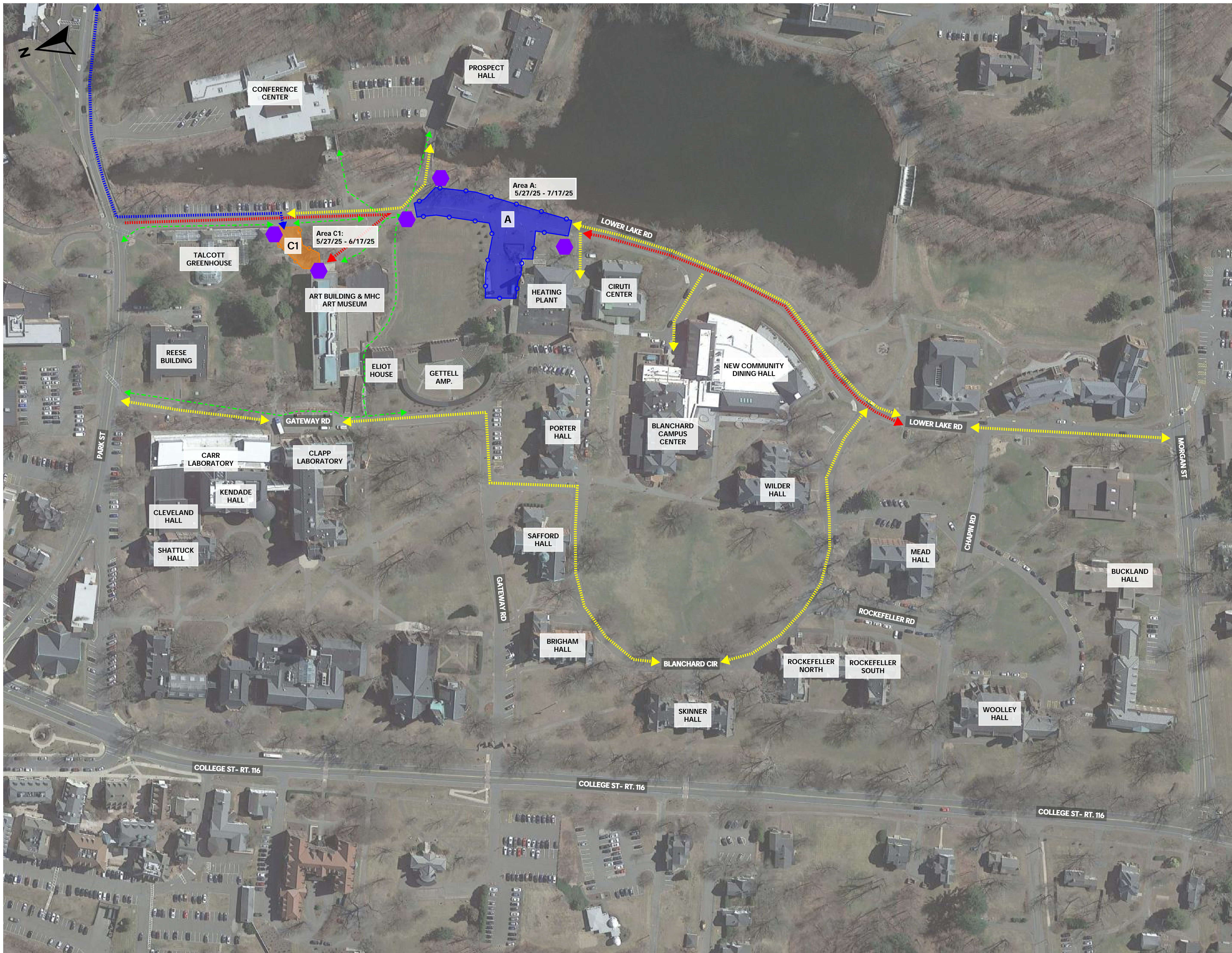
Area A Duration

5/27/25 - 7/14/25

Area C1 Duration

5/27/25 - 6/17/25

NOTES:



LEGEND

- Area C1
- Construction Traffic During Construction
- Fire Department Access During Construction
- Pedestrian Traffic During Construction
- Sign - "Sidewalk Closed"
- Vehicular Traffic During Construction

Mount Holyoke College
 Campus Conversion
 Phase 3 Distribution
 Area A & C1 - Traffic Plan

SL-04.1