

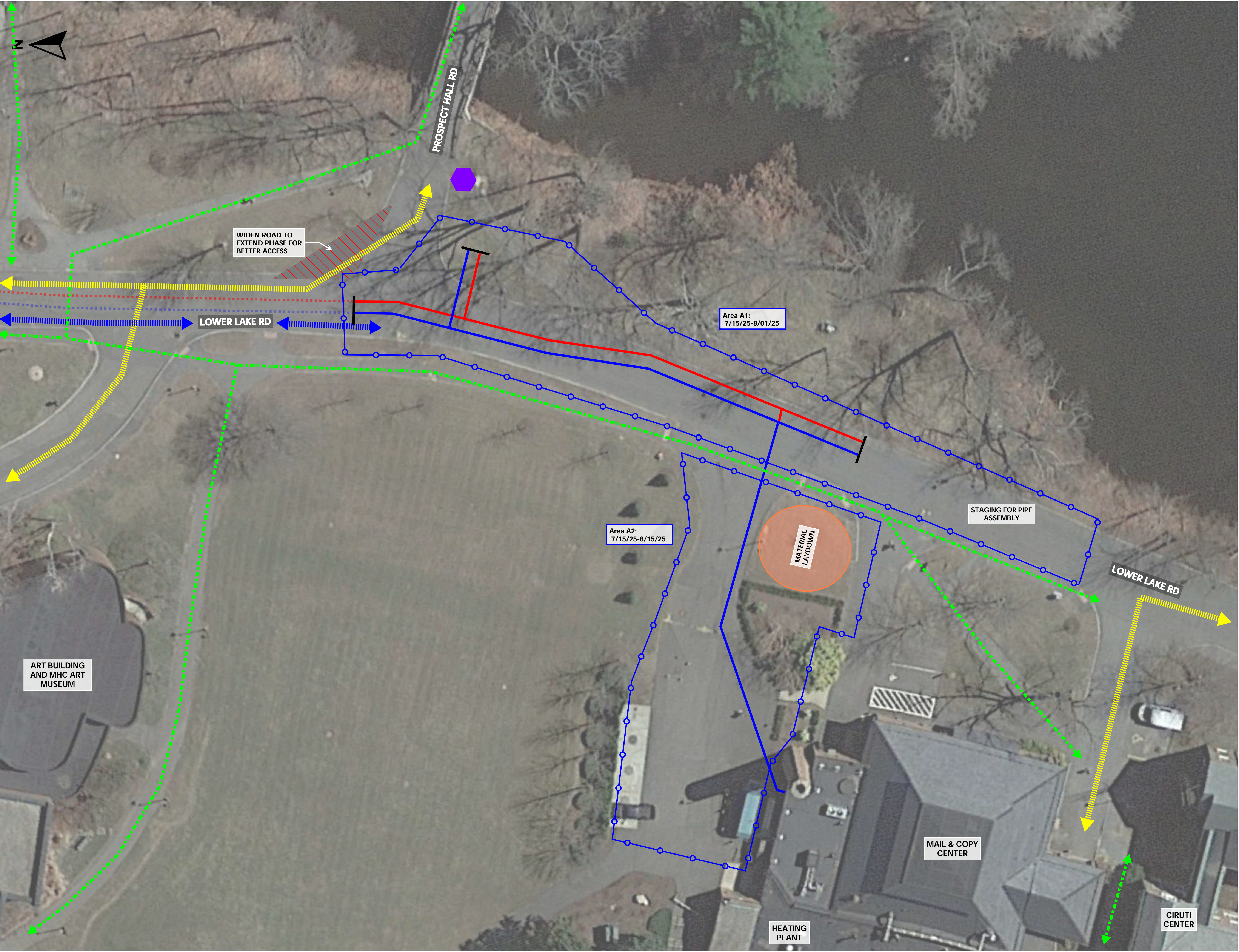
NOTES:

- LEGEND
- Area A1
  - Area A2
  - Area B
  - Area C
  - Area E
  - Area F
  - Energy Center
  - Lay Down Area

Mount Holyoke College  
Campus Conversion  
Phase 3 Distribution  
Area Overview

SL-01





Established in 1879

Area A1 Duration  
7/15/25 - 8/1/25  
Area A2 Duration  
7/15/25 - 8/15/25

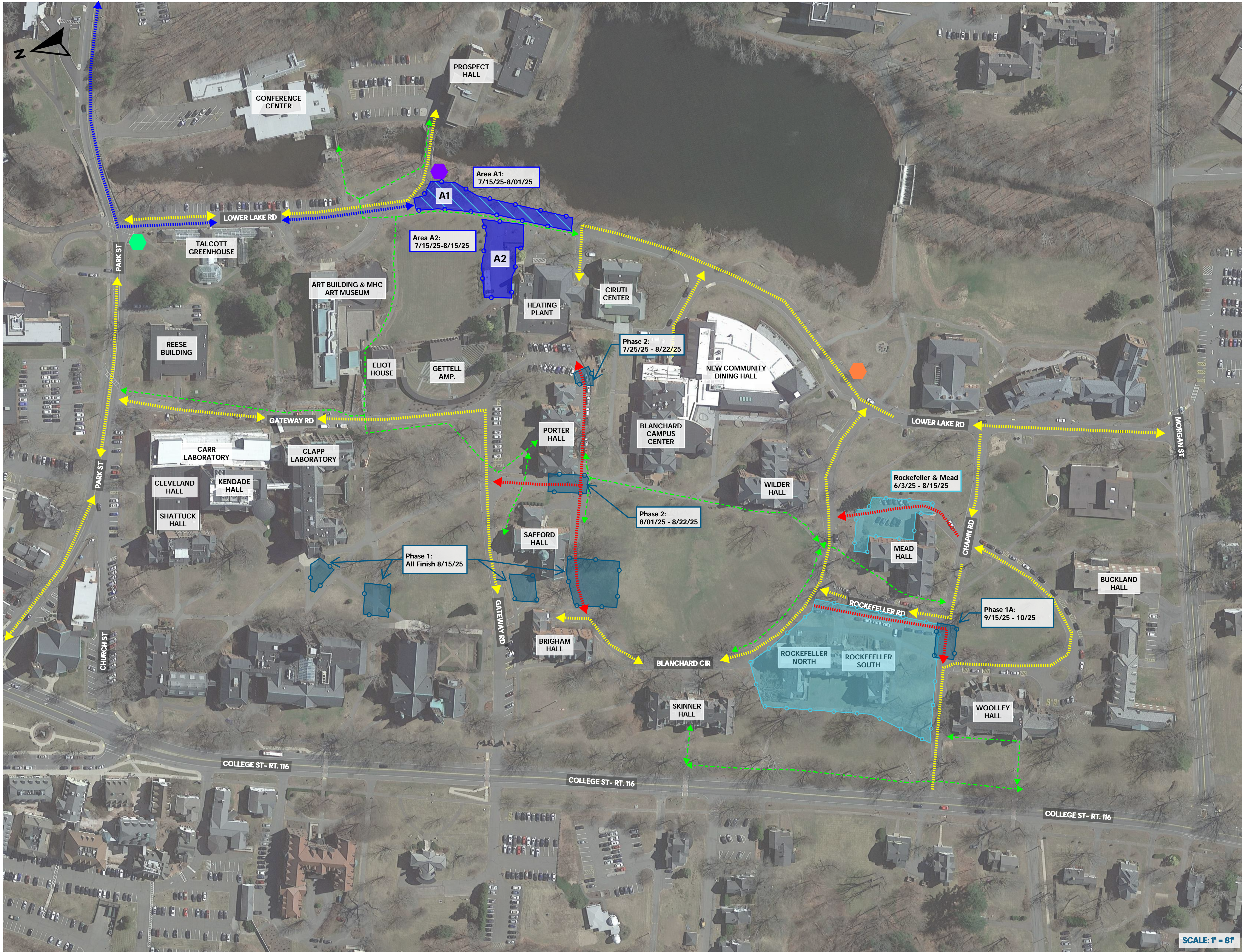
NOTES:

- LEGEND
- Area A1 & 2
  - Construction Traffic During Construction
  - Current Chilled Water - Area A
  - Current Hot Water - Area A
  - Future Chilled Water
  - Future Hot Water
  - Pedestrian Traffic During Construction
  - Sign - "Sidewalk Closed"
  - Vehicular Traffic During Construction

Mount Holyoke College  
Campus Conversion  
Phase 3 Distribution  
Area A1 & A2

SL-02





Established in 1879

Area A1 Duration  
7/15/25 - 8/1/25  
Area A2 Duration  
7/15/25 - 8/15/25

NOTES:

Traffic Plan from 7/15/25 - 8/01/25

LEGEND

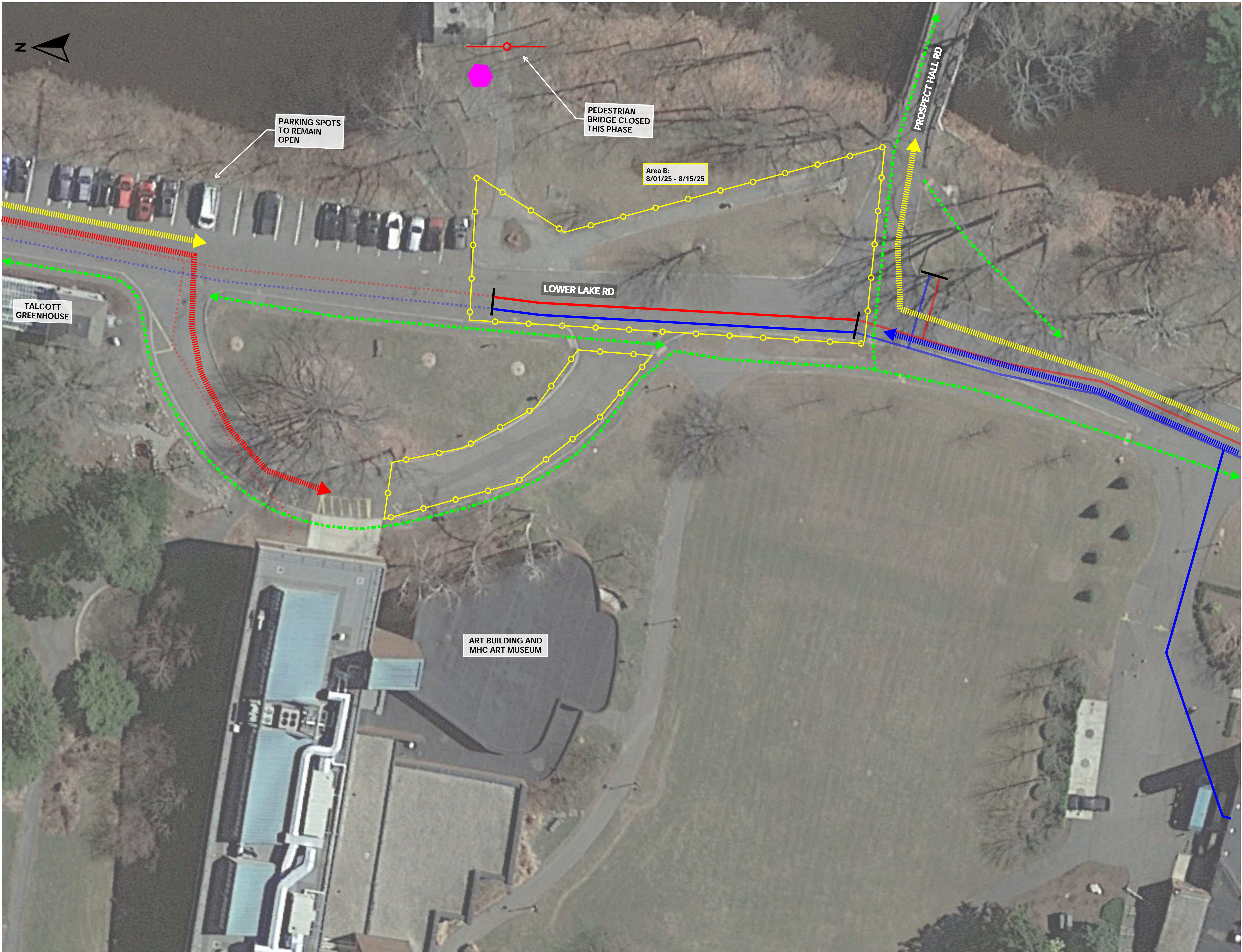
- Area A1
- Area A2
- Construction Traffic During Construction
- Gasket Replacement Project
- Pedestrian Traffic During Construction
- Road Closed to Vehicular Traffic
- Rockefeller & Mead Renovations
- Sign - "Sidewalk Closed"
- Sign - "No Thru Traffic Access to: Mail Center Blanchard"
- Sign - "No Thru Traffic"
- Vehicular Traffic During Construction

Mount Holyoke College  
Campus Conversion  
Phase 3 Distribution  
Area A1 & A2 - Traffic Plan

SL-02.1

SCALE: 1" = 81'





Established in 1879

Area B Duration  
8/01/25 - 8/15/25

NOTES:

-

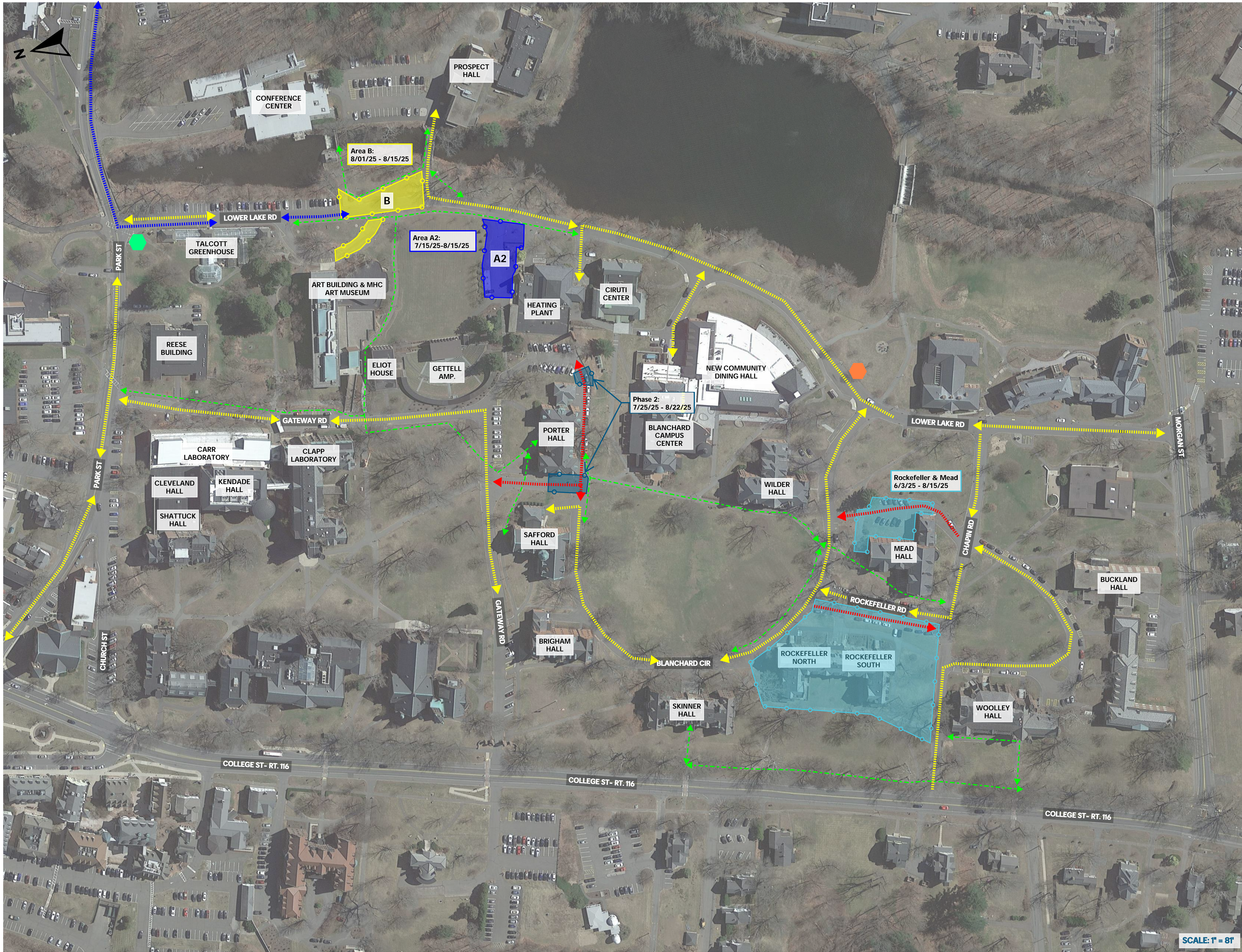
LEGEND

- Area B
- Construction Traffic During Construction
- Current Chilled Water - Area B
- Current Hot Water - Area B
- Fire Department Access
- Pedestrian Traffic During Construction
- Phase Delineation
- Sign - "Bridge Closed"
- Site Fence
- Vehicular Traffic During Construction

Mount Holyoke College  
Campus Conversion  
Phase 3 Distribution  
Area B

SL-03





Established in 1879

Area A2 Duration  
7/15/25 - 8/15/25  
Area B Duration  
8/01/25 - 8/15/25

NOTES:

LEGEND

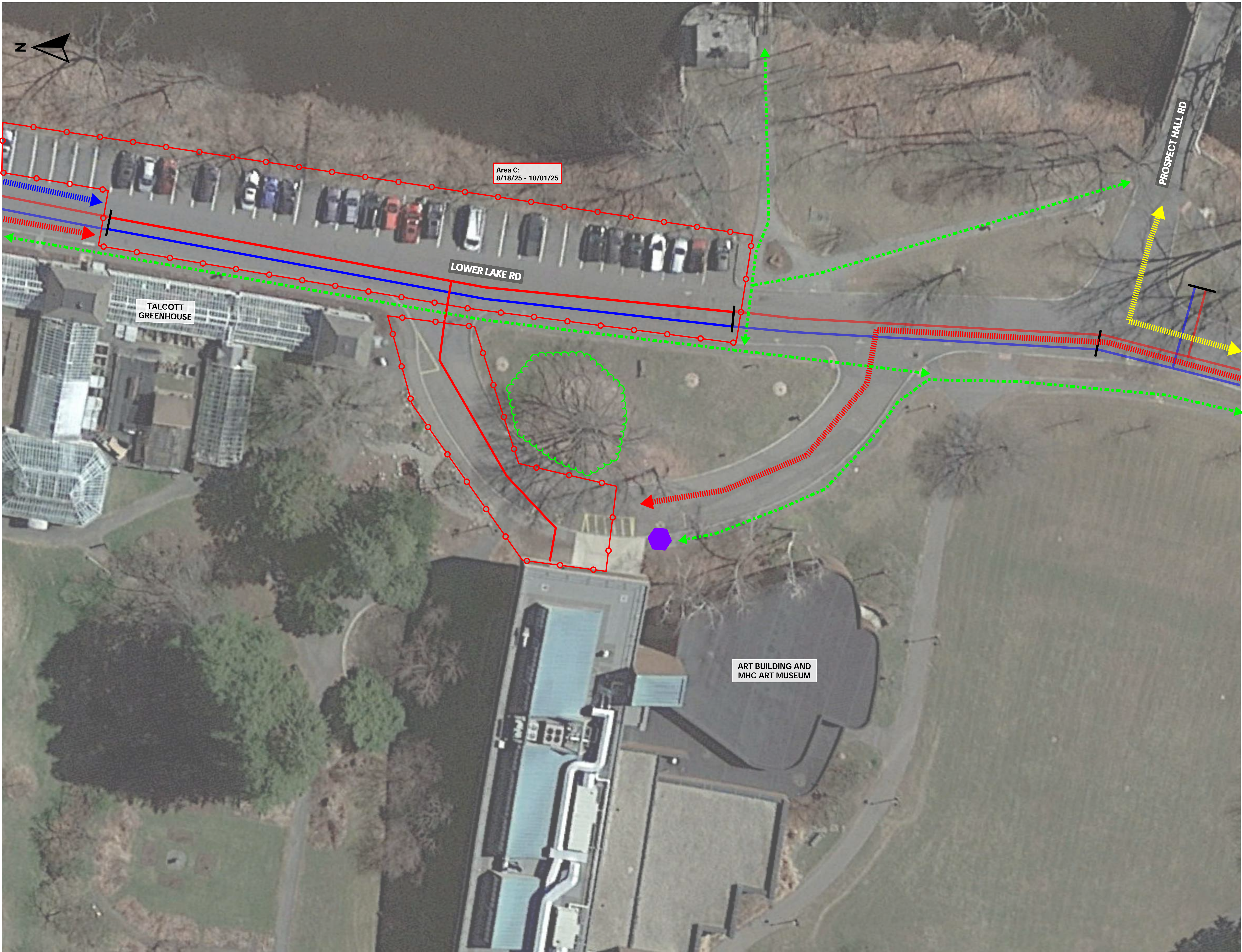
- Area A2
- Area B
- Construction Traffic During Construction
- Gasket Replacement Project
- Pedestrian Traffic During Construction
- Road Closed to Vehicular Traffic
- Rockefeller & Mead Renovations
- "No Thru Traffic Access to: Mail Center, Blanchard, Prospect Hall"
- Sign - "No Thru Traffic"
- Vehicular Traffic During Construction

Mount Holyoke College  
Campus Conversion  
Phase 3 Distribution  
Area A2 & B - Traffic Plan

SL-03.1

SCALE: 1" = 81'





Established in 1879

**Area C Duration**  
**8/18/25 - 10/01/25**

NOTES:

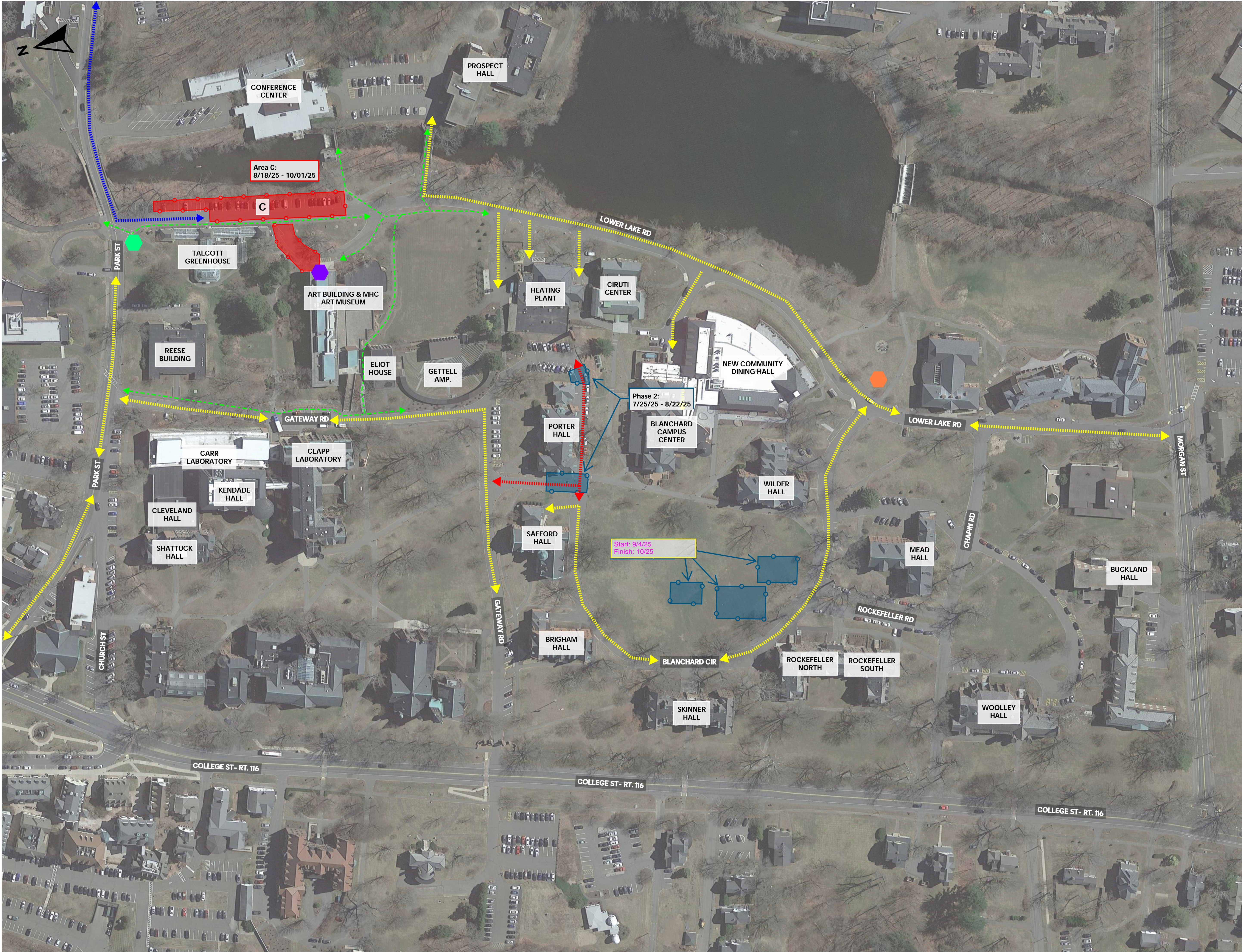
LEGEND

- Area C
- Completed Chilled Water Distr.
- Completed Hot Water Distr.
- Construction Traffic During Construction
- Current Chilled Water Distr.
- Current Hot Water Distr.
- Fire Department Access
- Pedestrian Traffic During Construction
- Phase Delineation
- Sign - "Sidewalk Closed"
- Tree Protection

Mount Holyoke College  
Campus Conversion  
Phase 3 Distribution  
Area C

**SL-04**





Established in 1879

**Area C Duration**  
**8/18/25 - 10/01/25**

NOTES:

- Crew 1

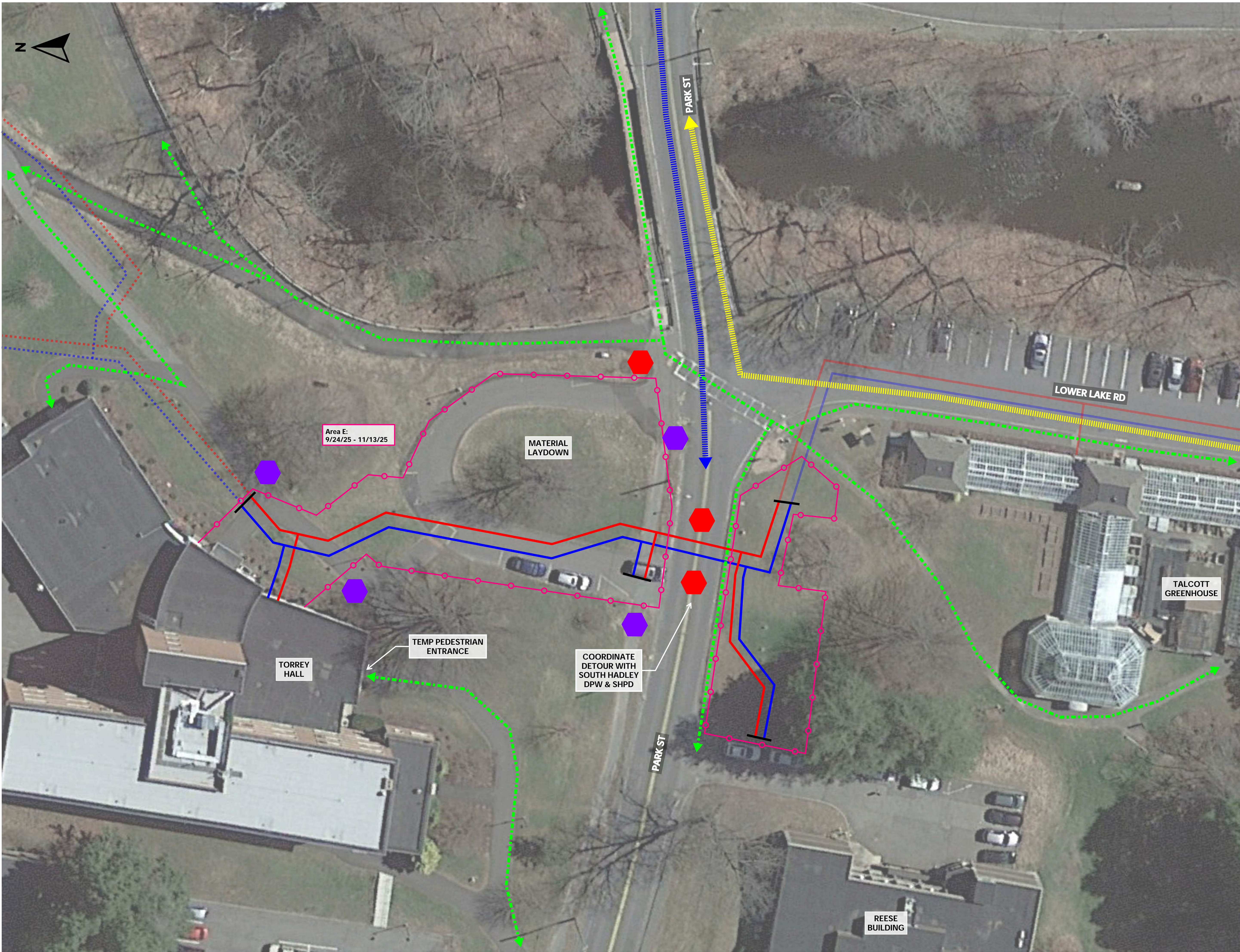
LEGEND

- Area C
- Construction Traffic During Construction
- Gasket Replacement Project
- Pedestrian Traffic During Construction
- Road Closed to Vehicular Traffic
- Sign - "No Thru Traffic Access to Mail Center Blanchard Heat Plant Prospect"
- Sign - "No Thru Traffic"
- Sign - "Sidewalk Closed"
- Vehicular Traffic During Construction

Mount Holyoke College  
Campus Conversion  
Phase 3 Distribution  
Area C - Traffic Plan

SL-04.1





Established in 1879

Area E Duration  
9/24/25 - 11/13/25

NOTES:

- Police detail on both sides of road closure.
- Sidewalk along South side of Park St. to remain open throughout Area E work except when the road is closed.

LEGEND

- Area E
- Completed Chilled Water
- Completed Hot Water
- Construction Traffic During Construction
- Current Chilled Water Distr.
- Current Hot Water Distr.
- Future Chilled Water
- Future Hot Water
- Pedestrian Traffic During Construction
- Phase Delineation
- Sign - "Road Closed"
- Sign - "Sidewalk Closed"
- Vehicular Access During Construction

Mount Holyoke College  
Campus Conversion  
Phase 3 Distribution  
Area E

SL-06





Established in 1879

Area C Duration  
8/18/25 - 10/01/25

Area E Duration  
9/24/25 - 11/13/25

NOTES:

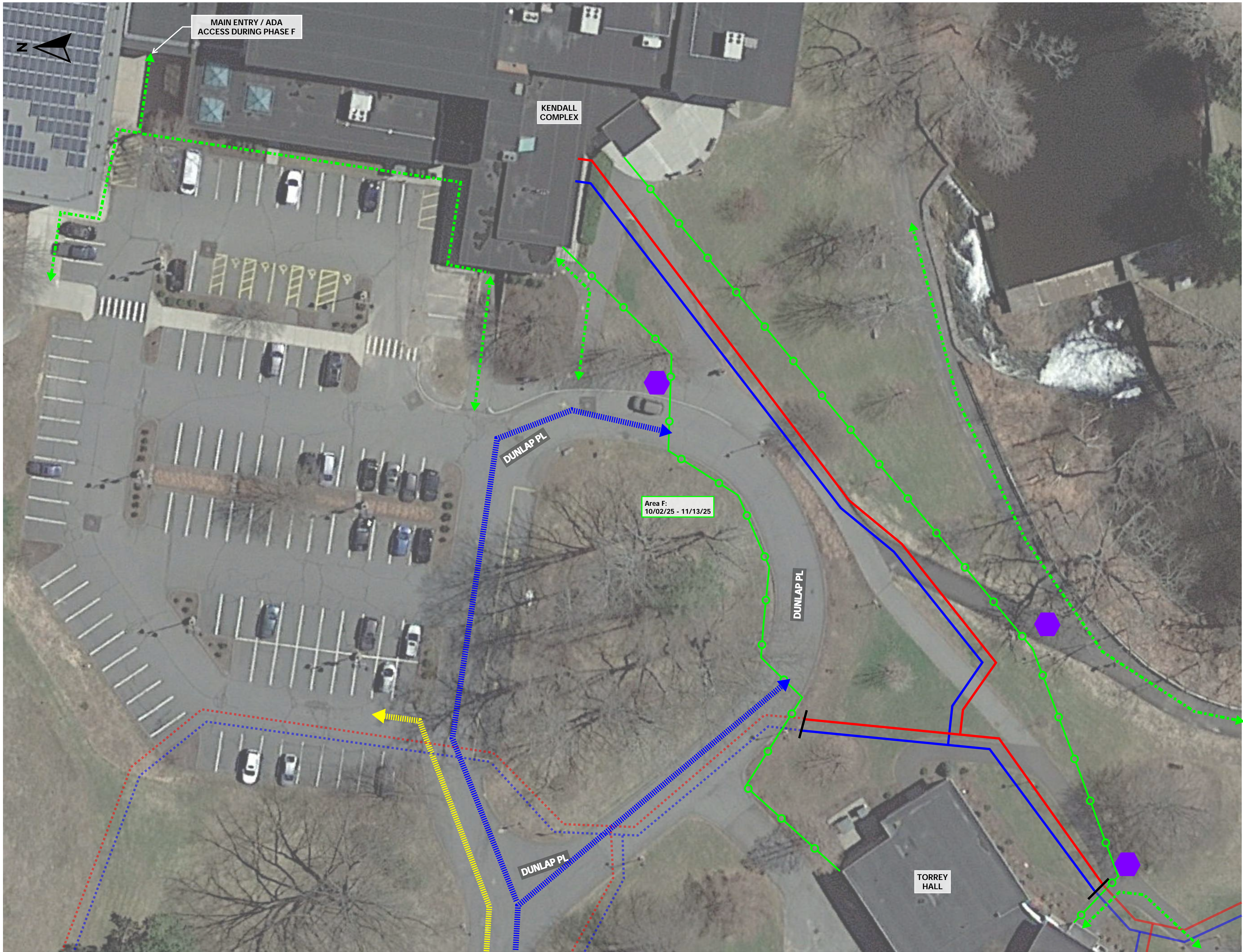
LEGEND

- Area C
- Area E
- Area E - Road Closure TBD
- Construction Traffic During Construction
- Energy Center
- Lay Down Area
- Pedestrian Traffic During Construction
- Sign - "Road Closed"
- Sign - "Sidewalk Closed"
- Vehicular Traffic During Construction

Mount Holyoke College  
Campus Conversion  
Phase 3 Distribution  
Area C & E - Traffic Plan

SL-06.1





Established in 1879

Area F Duration  
10/02/25 - 11/13/25

NOTES:

- LEGEND
- Area F
  - Completed Chilled Water
  - Completed Hot Water
  - Construction Traffic During Construction
  - Current Chilled Water - Area F
  - Current Hot Water - Area F
  - Future Chilled Water
  - Future Hot Water
  - Pedestrian Traffic During Construction
  - Phase Delineation
  - Sign - "Sidewalk Closed"
  - Vehicular Access During Construction

Mount Holyoke College  
Campus Conversion  
Phase 3 Distribution  
Area F

SL-07





Established in 1879

Area E Duration  
9/24/25 - 11/13/25  
Area F Duration  
10/02/25 - 11/13/25

NOTES:

LEGEND

- Area E
- Area E - Road Closure TBD
- Construction Traffic During Construction
- Energy Center
- Lay Down Area
- Pedestrian Traffic During Construction
- Sign - "Road Closed"
- Sign - "Sidewalk Closed"
- Vehicular Access During Construction

Mount Holyoke College  
Campus Conversion  
Phase 3 Distribution  
Area F & E - Traffic Plan

SL-07.1